

Accessing eduroam using Windows 7 or Windows Vista

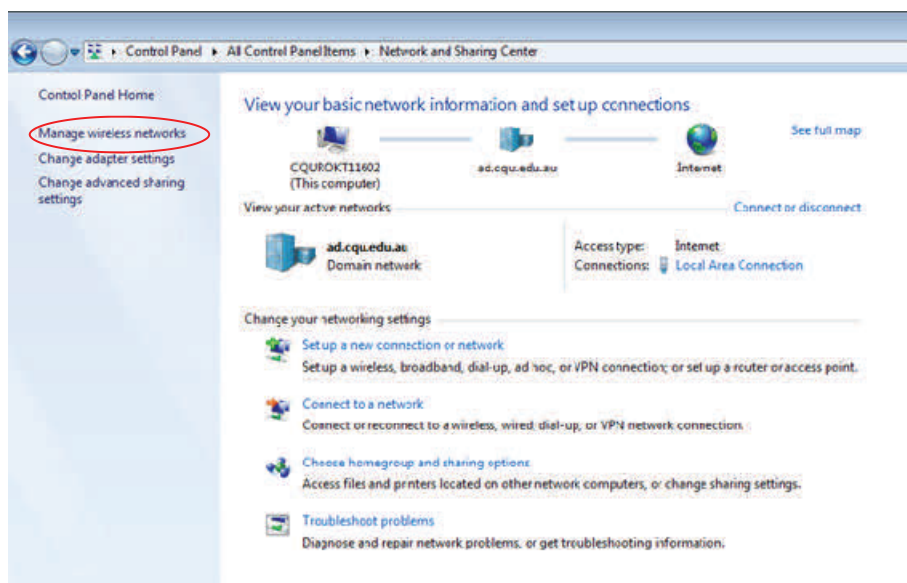
Instructions to access eduroam	p. 1
Hints and Tips	p. 4
Assistance with eduroam	p. 4

Instructions

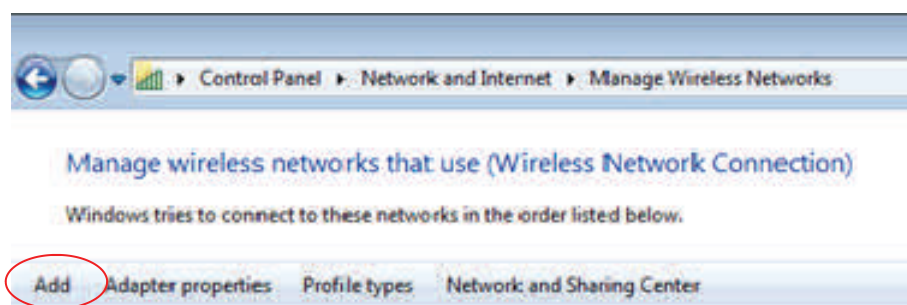
1. Open the **"Network and Sharing Center"**

This is located by selecting the **"Start"** menu and clicking the **"Control Panel"** option then selecting **"Network and Sharing Center"**

2. Select **"Manage Wireless Networks"**



3. A **"Manage wireless networks that use (Wireless Network Connection)"** window will open. Select the option **"Add"**.



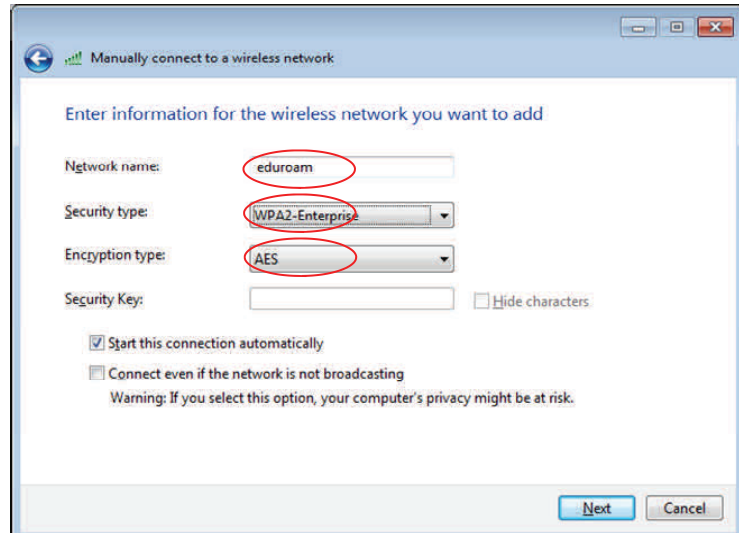
eduroam using Windows 7 or Windows Vista(continued)

4. Please enter the following information in the fields located in the **"Manually connect to a wireless network"** window (pictured right).

Network name: **"eduroam"**
 Security type: **"WPA2-Enterprise"**
 Encryption type: **"AES"**

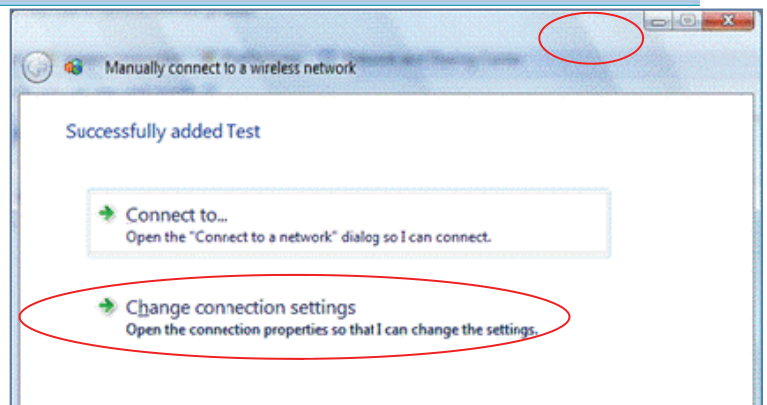
Click **"Next"**.

4.



5. To establish the settings for eduroam (the wireless network), click **"Change connection settings"**.

5.

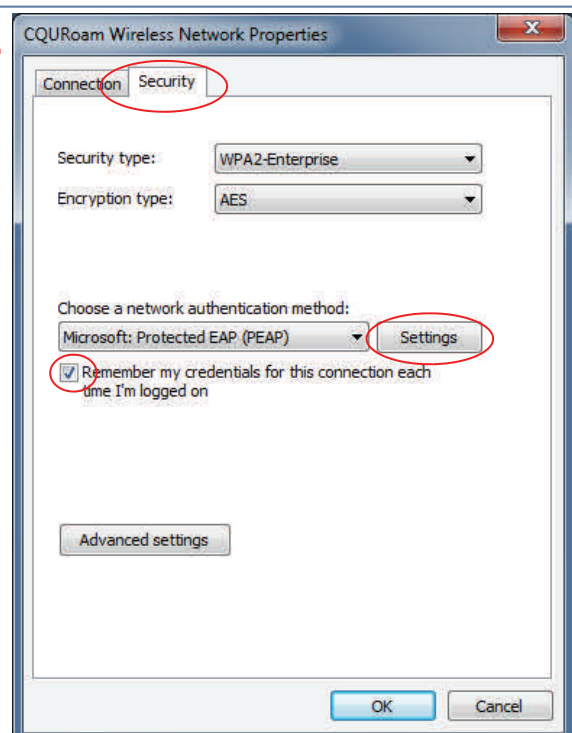


6. Select the **"Security"** tab (pictured left).

Ensure the **"Remember my credentials for this connection each time I'm logged on"** is checked.

7. Click the **"Settings..."** button.

6.



eduroam using Windows 7 or Windows Vista (continued)

8. A "Protected EAP Properties" window will open (pictured right).

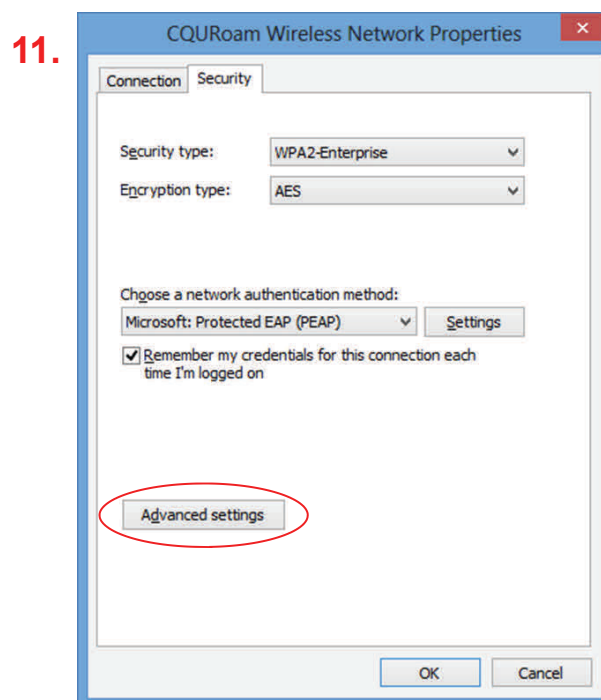
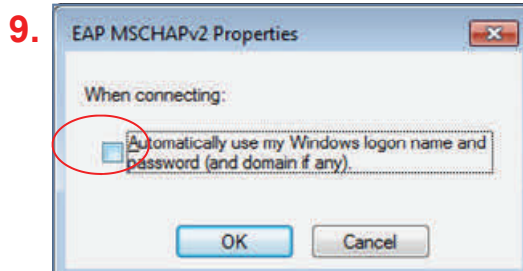
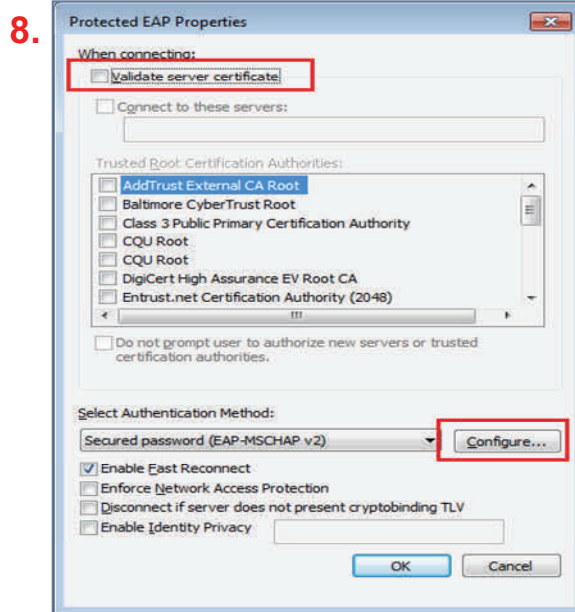
Untick "Validate server certificate".

Click "Configure".

9. Untick the "Automatically use my Windows logon name and password" option (pictured below).

10. Click "OK" and "OK" again.

11. From the eduroam wireless network properties window click "Advanced Settings"

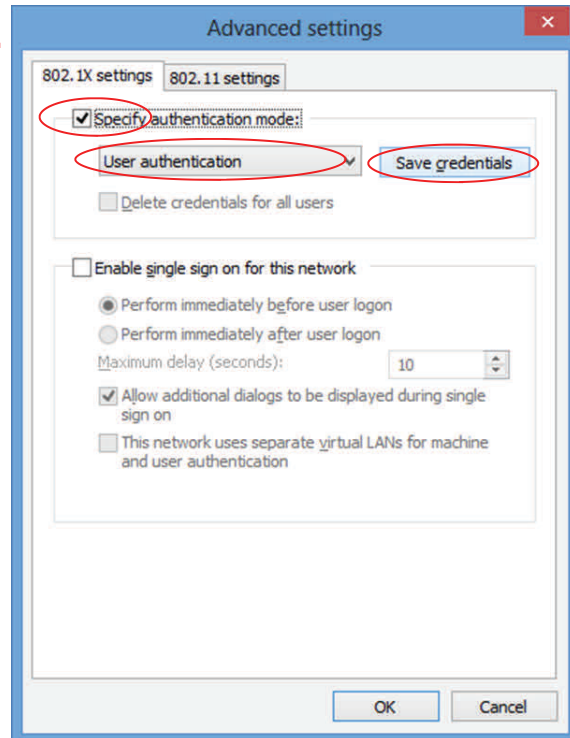


eduroam using Windows 7 or Windows Vista (continued)

12. Tick **"Specify authentication mode"**
13. Change **"User or Computer authentication"** to **"User authentication"**
14. Click **"Save Credentials"**
15. Enter your staff or student username followed by **@cqu.edu.au** and then your CQUniversity password . *In the Username field you must enter your username followed by "@cqu.edu.au"*
16. Click **"OK"** until all windows are closed

The eduroam (wireless) connection should now be available.

12.



15.



Hints and Tips

eduroam is a service that enables CQUniversity students and staff to connect a secure wireless network while *visiting* other educational institutions around the world. This makes it possible to travel (for work or study purposes) and connect to the internet the same as if you were on campus.

You can find out where eduroam is available in Australia at:

<http://www.eduroam.edu.au/tools-and-resources.html>

- If a popup continues to display asking for further information after you have entered your username and password, you may need to disable the Bluetooth connection. It is located in the system tray at the bottom right hand corner of the screen. To disable the Bluetooth connection, double click on it the Bluetooth icon and select **"WLAN"**. If that option is unavailable right click on the icon and select **"Disable"**.

Need assistance accessing eduroam?

Phone: 1300 666 620

Email: tasac@cqu.edu.au

Internal Extension: 9090

Online Request: <http://tasac.cqu.edu.au>

International: 61 7 4930 9090

Website: <http://www.cqu.edu.au/it-help>