

Research

YEAR IN REVIEW

2025

**SCHOOL OF NURSING, MIDWIFERY
AND SOCIAL SCIENCES**

Table of Contents

Acknowledgement of Country	3
Message from the Dean - Professor Lisa Wirihana	4
Message from the Deputy Dean (Research) – Professor Tracy Flenady	5
Message from the Postgraduate Research Coordinator – Dr Amy-Louise Byrne	6
Our Research	8
Our Vision	
Our Purpose	
Our Rankings	
Research Discipline and Clusters	
Discipline Leads	10
Cluster Leads	11
Research Highlights	12
SNMSS Awards and Recognitions 2025	12
Emeritus Professor Moira Williamson	15
Presentations & Networking	16
2025 RHD Research Symposium	21
In The Media	23
Our Performance	27
Spotlight - Queensland Centre for Domestic and Family Violence (QCDFVR)	29
Higher Degree by Research - Completions 2025	33-35
Research Higher Degree - Enrolled Candidates	36-40
Publications- Staff and Research Higher Degree Candidate outputs for 2025	42-48
School of Nursing Midwifery and Social Sciences Adjunct Appointments	49-50

Acknowledgement of Country

CQUniversity acknowledges Traditional Owners and Custodians and pays respect to the Elders of all First Nations peoples of Australia.



Message from the Dean

PROFESSOR LISA WIRIHANA



2025: A Year of Transformation, Achievement, and Momentum

2025 marked a year of remarkable transformation within the School of Nursing, Midwifery and Social Sciences. One of the most significant milestones was the retirement of Professor Moira Williamson from the role of Dean in April. Stepping into this position has been an honour, and I want to sincerely acknowledge Moira's leadership, dedication, and her unwavering commitment to strengthening research across all disciplines within the School. Her legacy continues to shape our progress.

Our research culture has flourished thanks to the exceptional work of Professor Tracy Flenady, our Deputy Dean (Research), and Dr Amy-Louise Byrne (GRL). Together with our outstanding research discipline and cluster leads, they have been a driving force—motivating teams, elevating research outputs, and inspiring innovation across the School.

This year also brought exciting global recognition. Following the announcement that CQUniversity's Nursing discipline ranked in the **Top 100 worldwide** in the 2025 *Shanghai Global Ranking of Academic Subjects*, the momentum continued. The 2026 Times Higher Education Subject Rankings confirmed upward trajectories for both Nursing and Social Work, reinforcing our growing international reputation in health and social science research.

Beyond Nursing and Midwifery, our Social Work team and the Queensland Centre for Domestic and Family Violence Research have continued to excel, achieving significant outcomes that contribute meaningfully to communities across Queensland and beyond.

Every success we celebrate is a testament to the dedication of every member of our School. Each researcher whose work aligns with our priorities plays a vital role in moving us forward. Thank you for your passion, your expertise, and your commitment.

Message from the Deputy Dean (Research)

PROFESSOR TRACY FLENADY



As I reflect on 2025, I am struck by just how extraordinary this year has been for research in the School of Nursing, Midwifery and Social Sciences. The depth, breadth, and impact of the work led by our staff and students have exceeded what I would once have thought possible. The achievements documented throughout this Year in Review speak not only to individual excellence, but to a collective commitment to rigorous, relevant, and values-driven research that makes a genuine difference to communities, health systems, and society.

This year, our research performance has been recognised on the global stage. The School of Nursing's continued strong positioning in international rankings, including placement in the 401–500 band internationally in the Times Higher Education World University Rankings and in the 76–100 band globally in the Shanghai Global Ranking of Academic Subjects (Nursing), reflects the sustained quality, influence, and integrity of our scholarship. These outcomes are not accidental; they are the result of years of steady investment in people, capability, and culture, and of an unwavering focus on research that matters.

What gives me the greatest pride, however, is not any single metric or milestone, but the way our research community operates. Across disciplines and clusters, I have seen collegiality, generosity, and leadership in action. Our researchers have secured competitive grants, published extensively in high-quality journals, influenced policy and practice, supported our Research Higher Degree candidates to completion and beyond, and engaged meaningfully with industry, government, and community partners. This work embodies the aspirations set out in our School's strategic plan: building research capacity, strengthening partnerships, integrating research and teaching, and translating knowledge into impact.

None of this would have been possible without the support of those around me. I am deeply grateful to Dr Amy-Louise Byrne, whose leadership as the SNMSS Graduate Research Lead and my trusted deputy has been central to operationalising our strategy and supporting our research community. I extend my sincere thanks to Marg Roche for her outstanding research administration support, which so often underpins success behind the scenes. I am also grateful to the Dean of SNMSS for enabling us to enact our strategic priorities, and to our Research Discipline and Cluster Leads, whose leadership continues to shape a strong, connected, and forward-looking research culture.

As we look ahead, our ambition remains clear. We will continue to invest in people, support emerging and established researchers, grow our RHD pipeline, deepen partnerships, and ensure our research contributes to equitable, high-quality outcomes for the communities we serve. If 2025 has shown us anything, it is that when we work together with purpose and trust, we can achieve far more than we ever imagined. Thank you to everyone who has contributed to this remarkable year.

Message from the Postgraduate Research Coordinator

DR AMY-LOUISE BYRNE



2025 has been an inspiring year for our Research Higher Degree (RHD) community. Our students have demonstrated exceptional resilience, innovation, and scholarly excellence, contributing meaningfully to the advancement of knowledge across nursing, midwifery, social work, and human society.

This year, we celebrated numerous milestones, including a record number of completions. Each completion reflects not only academic rigour but also a commitment to creating real-world change.

Our students showcased their research nationally and internationally, with candidate Jing Fang presenting at the DECLARE 2025 conference and Natalie Browning and Rachele Chee presenting at the Australian College of Midwives State Conference. These opportunities not only amplify their voices but also strengthen our school's reputation for research excellence. Additionally, our RHD students stepped up, for example, Annette Horton was appointed to the CQHHS Human Research Ethics Committee, and Stacey Pollard submitted two law reform proposals and joined the RESPECT program steering committee. These efforts resulted in Stacey earning a nomination for the 2025 student leader of the year award. These accolades affirm the quality of our research training environment and the dedication of our supervisors and mentors. However, leadership and excellence are not always measured by high-profile achievements; the consistent, thoughtful contributions of all our candidates are equally worthy of recognition and celebration.

As Postgraduate Research Coordinator, I am immensely proud of the collaborative spirit that defines our RHD community. Together, we have fostered an environment where curiosity thrives, ideas are challenged, and research translates into meaningful outcomes for health systems and communities. Looking ahead, we remain committed to supporting our students through innovative programs, industry partnerships, and mentorship opportunities. Thank you to our supervisors, research leaders, and professional staff for their unwavering support in making 2025 a year of remarkable achievement.



Our Research

Our Vision

To build research capacity within the School of Nursing, Midwifery and Social Sciences (SNMSS) and to support the generation of innovative research that contributes to the quality and safety of healthcare, systems, consumers and staff.

Our Purpose

The knowledge from our research will be translated to inform teaching and learning, as well as health service policies and clinical practice.

Our Rankings

Following the announcement in late 2025 that CQUniversity's Nursing discipline was ranked in the Top 100 worldwide in the 2025 Shanghai Global Ranking of Academic Subjects, the School of Nursing, Midwifery and Social Sciences (SNMSS) received further excellent news. The 2026 Times Higher Education (THE) Subject Rankings confirm continued upward momentum for both Nursing and Social Work, reinforcing the School's growing global profile across health and social science disciplines.

Research Discipline and Clusters

The SNMSS research is structured into four core educational disciplines:

- Nursing
- Midwifery
- Social Work
- Human Society (incorporating the Queensland Centre for Domestic and Family Violence)

To ensure that our research is meaningfully structured and aligned with our educational offerings, SNMSS research activities are organised under three interdisciplinary Research Clusters that facilitate collaboration and industry engagement. These are:

- Quality and Safety in Healthcare
- Psycho-social Well-being
- Safe Communities

These Research Clusters traverse all four discipline areas, as demonstrated in Figure 1 below, providing a platform for researchers from different fields to collaborate, exchange ideas, and address shared challenges. While research activity is organised within these broad clusters, Research Discipline Leads for Nursing, Midwifery, Social Work, and Human Society provide discipline-specific leadership and support. This ensures a strong connection between research and teaching across the school. Each cluster has designated Research Leads who provide mentorship and guide research initiatives. Staff are encouraged to engage with their discipline's Research Cluster Lead to build research capacity and foster cross-disciplinary collaboration.

Figure 1 – SNMSS Research Discipline and Cluster organisation



Discipline Leads

SNMSS research is facilitated through the expertise and collaboration of our discipline leads.

NURSING - Dr Amy-Louise Byrne

Amy is a senior lecturer and the Postgraduate Research Coordinator (PRC) for SNMSS. With over 17 years of clinical experience, Amy's expertise spans emergency, primary care, rural and remote nursing, along with health services management and education. Amy's research expertise is in qualitative designs, particularly Critical Discourse Analysis, with her work spanning workforce development, innovation in models of care and rural and remote health equity. Amy has a particular interest in Aboriginal and Torres Strait Islander people's health and well-being.



MIDWIFERY - Associate Professor Tanya Capper

Tanya Capper is an academic and midwife with over 27 years of international clinical midwifery experience. Tanya has held a range of midwifery positions including several clinical leadership roles within tertiary maternity services, a freestanding birth centre, and was the 'Named Midwife' for a large caseload of HIV-positive women at a London teaching hospital. Tanya's research interests include but are not limited to complex midwifery practice, workplace bullying in midwifery, workplace culture, legal and ethical aspects of midwifery practice, incarceration and parenthood and more.



SOCIAL SCIENCES - Dr Helen Hickson

Dr Helen Hickson is a senior lecturer with SNMSS. Before coming to CQU, Helen had a long career in the Commonwealth Public Sector as a social worker and manager. Helen has worked in Academic roles for the past ten years at several universities in Australia and has taught a broad variety of subjects including research methods, social work practice skills, and field education. Helen is passionate about critical reflection and reflective practices, and her current research interests are in supporting community recovery after disaster and giving a voice to women and children survivors of family violence.



HUMAN SOCIETY - Associate Professor Xanthe Weston

Xanthe is a criminologist and forensic scientist with specialisations in forensic human identification, criminology and offender-victim dynamics. Xanthe has a strong media presence, often called upon as an expert for high profile cases, particularly involving women and children. She is the co-host of the Australian true crime podcast 'Motive and Method.' Xanthe's research interests focus on the overlap of gendered violence, victimisation and offending behaviour in domestic and family violence interventions. Traversing each discipline area, SNMSS research is facilitated through the expertise and collaboration of our cluster leads.



Cluster Leads

Traversing each discipline area, SNMSS research is facilitated through the expertise and collaboration of our cluster leads.

QUALITY & SAFETY IN HEALTHCARE - Dr2 Danielle Le Lagadec

Dr Danielle Le Lagadec is a senior lecturer in the School of Nursing, Midwifery and Social Science at CQUniversity. She obtained a PhD in Entomology from the University of Pretoria, South Africa, and was involved in applied agricultural research for over 25 years. She obtained a B. Nursing from CQUniversity in 2014 and a PhD in Nursing in 2021. Her nursing research includes studies on the use of Early Warning Systems to recognise patient deterioration in resource-poor regional/rural hospitals. She continues to work in the clinical sector as a registered nurse in a small regional hospital.



PSYCHO-SOCIAL WELL-BEING - Dr Katrina Lane-Krebs

Dr Katrina Lane-Krebs is a Senior lecturer with SNMSS. Katrina is a teaching and research academic, with decades of experience in the higher education space Katrina obtained her PhD from CQUniversity in 2023 and also holds a B. Health Sciences and Master of Letters. Her research spans phenomenology, disability advocacy, and mental health, always with an eye toward real-world change.



SAFE COMMUNITIES - Dr Raquel Peel

Dr Raquel Peel is an internationally recognised relationships expert, an award-winning educator and researcher, and a passionate leader. At the Queensland Centre for Domestic and Family Violence Research, she is the Head of Course for the Domestic and Family Violence Practice education and training units. Her current research program encompasses studies on interpersonal relationships, domestic and family violence, mental health, suicide, and education. Raquel is a prolific contributor for The Conversation and her work has been showcased in numerous Psychology Today articles. She is regularly interviewed by the media to provide expert commentary on relationship matters at national and international outlets.



Research Highlights

SNMSS AWARDS AND RECOGNITIONS 2025

Ms Annie Barclay, Lecturer, was appointed to the Qld Clinical Guidelines working party for the *Menstrual Management of Children and Adolescents* guideline, coordinated by Clinical Excellence Queensland. Annie's involvement reflects her growing leadership in evidence-based clinical practice and contributes to the development of high-impact, state-wide guidance for improving adolescent health care.

Dr. Amy-Louise Byrne, Senior Lecturer, was invited to join the editorial board of the Australian Journal of Rural Health as an Associate Editor. This invitation is a testament to her expertise, research impact, and commitment to advancing rural health scholarship.

Dr Amy-Louise Byrne was guest editor for a special edition of *Nursing Open: Disrupting the Status Quo: Nurses and Midwives Driving Equity in Healthcare*. This special edition aimed to illuminate the pivotal role of nurses and midwives as catalysts for equity driven transformation across the healthcare continuum.

Dr Amy-Louise Byrne was also nominated for a CQU Values award across all five values of Engagement, Can Do, Openness, Leadership and Inclusiveness. Amy was nominated by her research team, which is a partnership between CQU SNMSS and SBL, Mackay HHS and Telecare Australia.

Associate Professor Tanya Capper has been appointed to the role of Retrieval Services Queensland Research Committee as an External Academic Expert. This is important work, particularly for birthing women in rural and remote locations.

Dr Liane McDermott (Senior Research Fellow), Ms Jamie Anderson (Lecturer) and Associate Professor Heather Lovatt (QCDFVR Director) completed an evaluation of the expansion and enhancement of integrated service responses and High-Risk Teams, funded by the Department of Justice. The study included surveys and interviews with 240 DFV sector participants, informing understanding of how these initiatives support effective DFV responses in Queensland.

Ms Annette Horton, PhD candidate, has been appointed as a member of the Central Queensland Hospital and Health Service (CQHHS) Human Research Ethics Committee. Annette applied independently and was accepted to serve on the committee, contributing her expertise to the ethical review of research proposals across the health service. This appointment reflects a strong commitment to research integrity and ethical governance—an important role in supporting high-quality, human-centred research.



Associate Professor Heather Lovatt, Director of the Queensland Centre for Domestic and Family Violence Research (QCDFVR), was appointed to the newly established Queensland Domestic and Family Violence Advisory Panel. This independent panel brings together professionals from across the sector to advise on reforms aimed at strengthening responses for victim-survivors and ensuring greater accountability for perpetrators. Heather's deep expertise in gendered violence and longstanding commitment to evidence-based policy and practice will be invaluable to the work of the panel. Her appointment reflects both her leadership in the field and the vital role QCDFVR continues to play in shaping systems-level change.

Associate Professor Heather Lovatt became a member of the Leaving Violence Program Expert Advisory Panel, Department of Social Services, Commonwealth Government. The Leaving Violence Program started on 1 July 2025 and supports eligible victim-survivors leaving violent intimate partner relationships.

Dr Katrina Lane-Krebs and **Dr Liane McDermott** have completed the 2025 Accelerate program. They are now eligible to be principal RHD Supervisors. Congratulations!

Dr Katrina Lane-Krebs was also nominated for a CQU Values award across all five values of Engagement, Can Do, Openness, Leadership and Inclusiveness, demonstrated through your visionary and values-based contributions as an academic and leader.

Dr Chanchal Kurup was awarded an Advance HE Senior Fellowship, recognising her sustained excellence in teaching, academic leadership, and contribution to the scholarship of learning and teaching in higher education.



Dr Liane McDermott was selected to participate in the 2025 CQUniversity Research Leadership Program—a prestigious, invitation-only initiative designed to support senior researchers in developing research programs, building collaborations, and leading research teams. Liane’s selection reflects her leadership potential and her commitment to advancing research impact across academic and industry settings.

Associate Professor Heather Lovatt and **Dr Liane McDermott** were awarded \$385,881 in research income to conduct the project “Evaluation of collaborative domestic and family violence approaches between the domestic and family violence sector and Queensland Police Service”. The centre continues to move from strength to strength in its incredibly important work.

Dr Liane McDermott and **Associate Professor Heather Lovatt**, in collaboration with Anglicare Southern Queensland, have completed the development of a suite of artefacts for a brief intervention trial targeting adults using domestic and family violence. This co-designed program model will guide implementation, evaluation and potential scale up of this important intervention.

Dr Raquel Peel has been awarded the 2025 Australian Psychological Society (APS) Media Award for Public Engagement with Psychological Science. The prestigious industry award has recognised her work in turning psychological science research into accessible information that supports mental health, relationship well-being and safer communities.

Stacey Pollard, PhD candidate, has demonstrated strong leadership and advocacy in 2025. She submitted two law reform proposals aimed at strengthening responses to domestic and family violence, aligning closely with her doctoral research. Stacey was also invited to join the steering committee for CQU’s RESPECT Program, supporting cultural change across the university. Her efforts have earned her a nomination for the 2025 Student Leader of the Year Award—a fitting recognition of her commitment to equity and student engagement.

Dr Deepa Rijal has been nominated for a CQU values award for the value of Inclusiveness demonstrated by your extraordinary compassion and dedication to supporting students during times of deep personal challenge.

Dr Colleen Ryan continues to make a significant impact in the student placement space, having been invited to join the project "Operation and Management of the National Placement Evaluation Centre" as an investigator. This collaborative initiative seeks to transform the quality and consistency of clinical placement experiences across Australia. Colleen’s invitation to contribute to this national project reflects her deep expertise, leadership, and sustained commitment to improving student learning outcomes.

Dr. Agnieszka Sobolewska, Dr. Chanchal Kurup, and Dr. Shannon Dhollande completed the 2025 Early Career Researcher Foundation Program, while **Dr. Amy-Louise Byrne and Dr. Jen Mulvogue** completed the 2025 Early Career Researcher Program.



Professor Sarah Wayland was invited to contribute her expertise to two significant national advisory groups in the field of suicide prevention. She has been appointed as an Expert Advisor to the LIFEWAYS Suicide Prevention Model Expert Advisory Group with the Queensland Centre for Mental Health Research, and as a member of the National Suicide Prevention Initiatives Evaluation Advisory Group with the Commonwealth Department of Health's Mental Health and Suicide Prevention Division.

These prestigious appointments recognise Sarah's leadership, expertise, and longstanding commitment to improving mental health outcomes through evidence-based policy and practice. They also recognise Sarah's leadership, expertise, and commitment to mental health reform.

Professor Wayland also continues her important work with the Manna Institute. Led by CQU's Professor Chris Doran, Sarah is part of a team aiming to understand and address mental health needs in rural and regional Australia. An evidence-based "Blueprint" is being developed to assist clinicians in connecting the social determinants of health with mental health interventions.

Professor Wayland also generously shared a curated series of professional learning resources with our Research community. These resources offer insight into knowledge translation, research impact, regional workforce needs and inclusive HDR supervision:

- How to consider research impact through nontraditional writing [Watch here](#);
- How to consider the needs of a Regional Mental Health Workforce [Watch here](#);
- Accessible supervision for HDR students with disabilities [Read here](#); and
- What does knowledge translation mean in action? [Watch here](#)

EMERITUS PROFESSOR MOIRA WILLIAMSON



“The School of Nursing, Midwifery and Social Sciences Office of Research would like to acknowledge the outstanding contribution to research of Emeritus Professor Moira Williamson.

Moira’s commitment and dedication to nursing and midwifery research has been an inspiration to her colleagues, students and emerging researchers. Thank you, Moira.”

Professor Tracy Flenady, Deputy Dean Research

For many years, Moira’s leadership has been a cornerstone of excellence in nursing and midwifery education. This commitment to teaching has shaped generations of clinicians. Moira’s research has advanced the profession, and her dedication to community engagement has strengthened the health and wellbeing of regional communities.

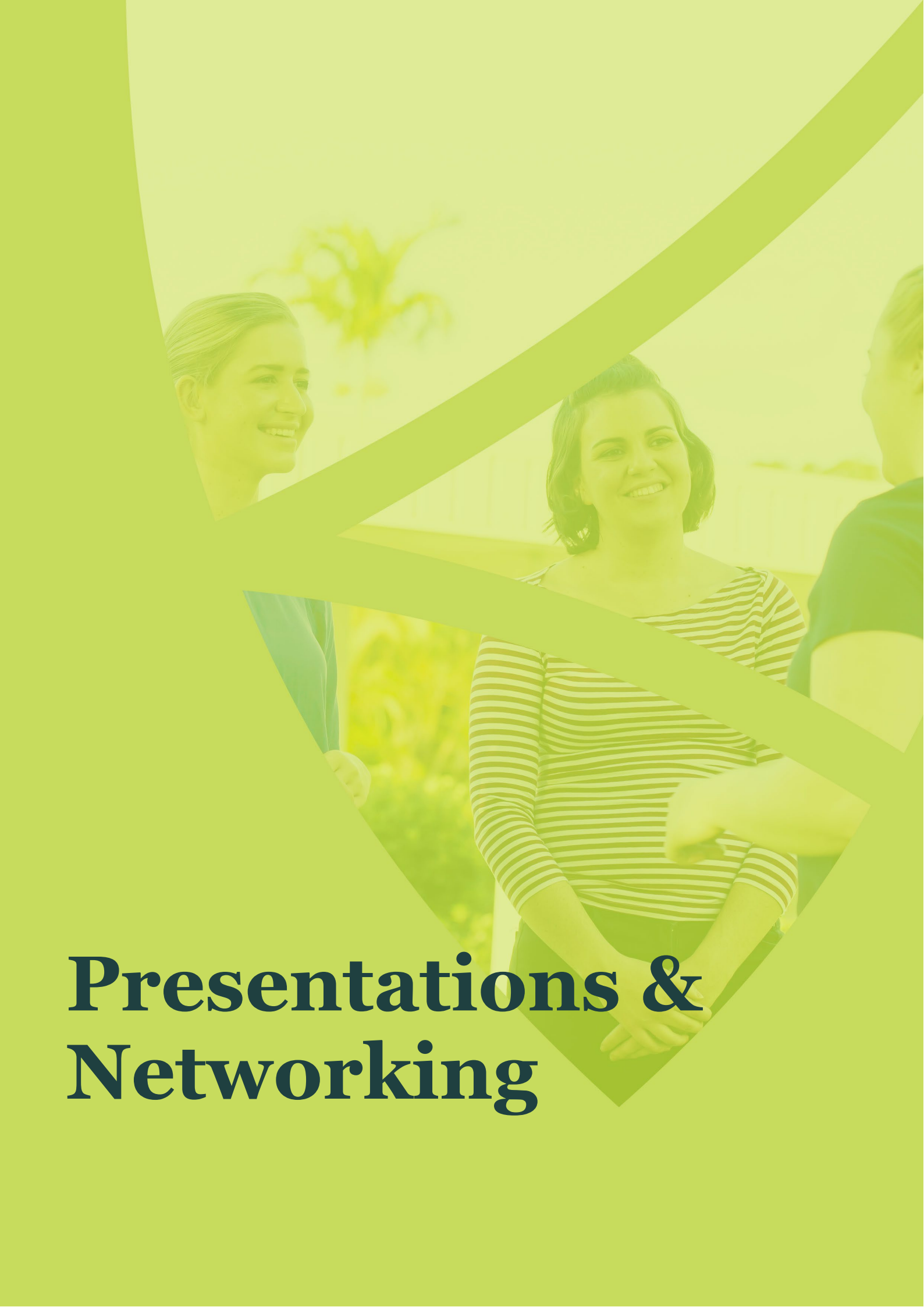
Moira has led with clarity, compassion, and unwavering purpose and her years of exceptional leadership have left an enduring legacy—one defined by integrity, innovation, and a deep belief in the power of nursing and midwifery to transform lives.

“Research is fundamental to everything we do. Without it the world would not be the place it is currently. Everything we do in health care practice needs to be based on evidence-based practice wherever possible.

Together, we can magnify the ripple effect of our research, making a lasting impact on healthcare and society.”

Emeritus Professor Moira Williamson





Presentations & Networking

Elizabeth Boardman contributed to a workshop at the United Workers Union 'Lighting the Way' conference. Workshop presenter at the annual conference for Teacher Aids in Queensland. The presentation introduced workers to the signs to look for when working with children and young people who might be experiencing DFV. This is the fourth year QCDFVR has been invited to speak at this sold-out conference, and this workshop is always at maximum capacity.



Elizabeth Boardman and **Suewellyn Kelly** at the Stop DV Conference in November – the conference theme "Turning the Tide: Supporting Survivors and Shaping Change". The Queensland Centre for Domestic and Family Violence Research had a stand at the Conference and its information on educational courses and merchandise was greatly supported.

Natalie Browning, PhD candidate and lecturer, presented "*Where is the midwife in the provision of care for families diagnosed antenatally with life-limiting fetal conditions? An integrative review.*"

Rachelle Chee presented "*Influencers of women's expectations for pregnancy, birth, and parenting on social media: An integrative review,*" examining how digital platforms shape maternal perceptions and expectations. At the Australian College of Midwives Queensland State Conference – Townsville, 16 May 2025.

Jing Fang, PhD candidate, was invited to present a poster at the upcoming DECLARE 2025 Delirium Conference in Cairns. Jing's presentation, "*Nurses' experience and response to aggression from patients with delirium and/or dementia in the hospital setting: A scoping review,*" contributes valuable insight to delirium-related care research.

Associate Professor Catherine Hungerford presented the Oration at the Australian College of Mental Health Nursing 49th Conference – 10-12 September 2025.

Dr Katrina Lane-Krebs with **Dr Susan Rockloff** and **Adjunct Associate Professor Anthony Welch** delivered an oral presentation titled "*Disrupted mothering: Addressing hidden challenges in parenting a child with a neurological disability,*" co-authored with Dr Susan Rockloff (SNMSS) and Adjunct A/Prof Anthony Welch at the International Nursing, Healthcare, and Safety Conference – 22–27 February 2025.



Dr Lane-Krebs achieved an overall ranking of 5th for the Festival of Nursing Symposium in Brisbane, 24-26 July for engagement and being an engaging and motivational speaker. On the day of her oral presentation, Katrina scored #1 ranking. The presentation was on: Transitioning to the adult world: Continuity of care challenges when ageing out of paediatric environments in regional/rural areas of Australia.

Dr Lane-Krebs also presented at the Council of Deans of Nursing and Midwifery (CDNM) Symposium, Christchurch, New Zealand, 30–31 October 2025, under the *Leadership and Policy Stream*. Katrina's co-authors included Marina Cousins and Adjunct Senior Lecturer Colleen Johnston-Devin.



Johnston-Devin, C., Cousins, M., Lane-Krebs, T., & Lane-Krebs, K.* (2025). *Dressing the part: Exploring the impacts of nursing attire on perceptions of competence, trust and professionalism in Australia* [Conference presentation].

Johnston-Devin, C., Beccaria, L., du Preez, P., Cousins, M., & Lane-Krebs, K.* (2025). *Student nurses' assessment of pain* [Conference presentation].

Lane-Krebs, C.*, & **Lane-Krebs, K.** (2025). *Transitioning to the adult world: Continuity of care challenges when ageing-out of paediatric disability services in regional Australia* [Conference presentation].

*Presenter indicated



Associate Professor Heather Lovatt attended the World Conference of Women's Shelters in Sydney.

Associate Professor Lovatt and Colleen Gunning at the Far West Indigenous Family Violence Service DFV Forum, held in Charleville in November.

Associate Professor Lovatt and **Dr Liane McDermott** had an abstract accepted for oral presentation at the Australian and New Zealand Society for Criminology Conference in Brisbane, December 2025 – "Non-Fatal Strangulation".

QCDFVR staff (Associate Professors Lovatt and Weston and Drs McDermott and Raquel Peel) recently participated in training on Realist Evaluation, led by Professor Gill Westhorp. This valuable learning opportunity was complemented by collaboration with Professor Tim Carey and the Centre for Health Equity in Regional and Remote Communities.



Associate Professor Xanthe Weston completed a strategic international research tour aligned with the priorities of the Queensland Centre for Family and Domestic Violence Research (QCDFVR). The tour included participation in an AI conference in Lisbon and a series of high-impact meetings across the UK with the Centre for Research into Violence and Abuse (Durham University), the Institute for Relational Research (University of Central Lancashire), Professor Cheryl Allsop (University of South Wales), Locate International, and Professor Hamid Bouchachia (Bournemouth University). Discussions centred on missing persons research, crime linkage using AI, and innovative approaches to relational and violence-related research. This engagement strengthens QCDFVR's global research networks, informing collaborative projects with far-reaching impact.



Associate Professor Weston spoke at the BAD: Sydney Crime Writers' festival, in a session addressing miscarriages of justice, with a focus on Kathleen Folbigg's case.

Associate Professor Weston attended Parliament House in NSW to meet with Premier Chris Minns and Minister Penny Sharpe to discuss an inquiry into the missing and murdered women on the east coast of NSW. A submission will be made to the NSW Parliament in October.

Associate Professor Weston had three abstracts accepted for oral presentation at the Australian and New Zealand Society for Criminology Conference in Brisbane, December 2025:

- *Fire as a primary means of homicide*, with Honours Student, Lucy Melocco-Cook (external to CQU).
- *Neurocriminology and psychopathy*, with Dr Raquel Peel and Honours student Jordan Pilon (external to CQU).
- *Work-integrated learning in criminology*, with colleagues from Swinburne University.



Dr Liane McDermott and **Dr Raquel Peel** attended the Engaging Men & Boys to End the Cycle of Violence Conference in March 2025.

Simone Ohlin and **Rachel Barber** recently presented at the CQUniversity Scholarship of Teaching and Learning Conference. Their presentation was titled *Designing learning for well-being: Using the writing process to scaffold academic literacy and support first-year success*. Well done team! Quality evidence-based teaching is essential to our university status.

Dr Jen Mulvogue presented "Global Distortion of the mental health nurse identity and scope of practice through Artificial Intelligence generated images: A critical analysis" At the Australian College of Mental Health Nursing 49th Conference, 10-12 September 2025.

Shunil Raina also presented at the Conference – "The lived experience of mental health nurse academics in Australian universities: a hermeneutic phenomenological study".



Dr Raquel Peel presented at the Australian Psychology Learning and Teaching Conference in Fremantle, and contributed to a roundtable on the use of AI in Honours research.

Dr Peel and **Mark Walters** (HDR Candidates) attended the Services and Practitioners for the Elimination of Abuse Queensland Forum, October 2025.

Dr Colleen Ryan presented the following:

Ryan, C. and the NPEC project team: The Australian National Placement Evaluation Centre: A contemporary evaluation project to enhance clinical placement educational quality.

Ryan, C., Bond., K., Chugh, R., Flanders, M., Johnston, K., Vanderburg, M., & Clapperton, R.: Enhancing science language proficiency through technology-enhanced learning. At the International Council of Nurses Congress, Helsinki – 9-13 June 2025

Dr Ryan presented “Empowering Nurses and Midwives to design quality and culturally safe simulation” and “Transforming Nursing and Midwifery practice education through an Australian sector wide initiative” at the Council of Deans of Nursing and Midwifery Symposium – 30-31 October 2025.

2025 RHD Research Symposium

Breaking barriers, building futures: research for a safer and healthier society

18-20TH NOVEMBER BRISBANE



The SNMSS Research Symposium is our flagship event for RHD Candidates, supervisors and researchers. The symposium is organised by a dedicated committee, they were:

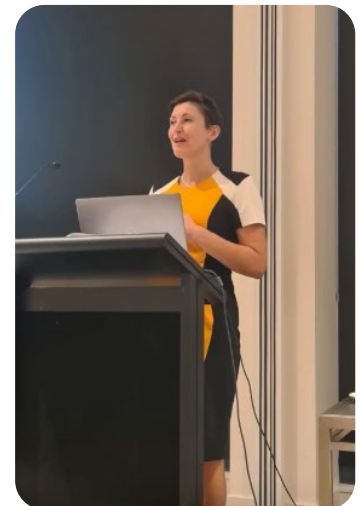
- Dr Amy-Louise Byrne (Chair)
- Ade Adeleye
- Carmen Barnard
- Dr Helen Hickson
- Jay Shephard
- Marg Roche
- Rachelle Chee
- Dr Shannon Dollande

This fun and engaging symposium aims to enhance candidate presentation skills, networking and engagement, allowing staff and candidates to see each other 'in real life!' This year's symposium was a roaring success; The Symposium included twenty-four RHD student presentations divided into our three Clusters – Safe Communities, Quality and Safety in Healthcare and Psycho-social Well-being. Four guest speakers presented, and, for the first time, a "Speed Date an Expert" session was held. The positive feedback on the event's format has been greatly appreciated.



Professor Tracy Flenady was the Master of Ceremonies (MC) for the event. Along with our RHD Candidate presentations, we had the privilege of Hosting Associate Professor Barbra Zupan from the School of Graduate Research (SGR), who presented on the supports and services available through SGR. Mr Warrick Pawsey, Health Partnerships Manager for research, came along to talk about industry engagement, and the importance of authenticity in managing relationships.

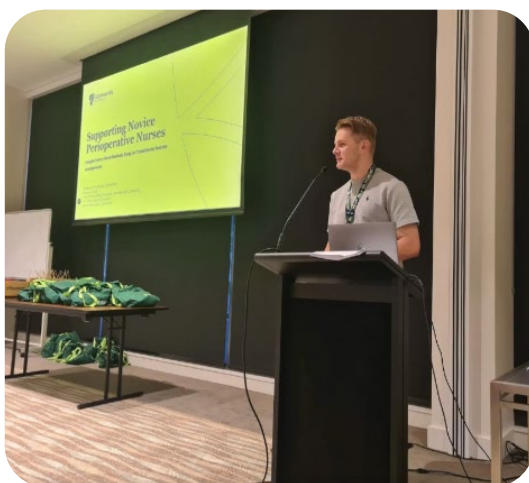
Associate Professor Xanthe Weston spoke to the audience about the Queensland Centre for Domestic and Family Violence. Xanthe explained how research students help bridge gaps between academic theory and frontline practice. Their research strengthens multidisciplinary collaboration criminology, justice, psychology, and social services, supporting the development of more effective and compassionate systems of support for victim-survivors.



Associate Professor Ritesh Chugh (School of Engineering and Technology) captivated the audience through his talk on being visible in academia. Ritesh explained that visibility can be built in many ways, not purely through publishing. #SNMSS certainly got a workout!

For the 2025 symposium, participants engaged in a speed-date an expert session. This facilitated fast connections, answers to burning questions and rapid growth of ideas. This session was wildly popular and will likely become a staple in the years to come.

Overall, the 2025 symposium was a great success. Our sincere thanks to the symposium committee, candidates' presenters, and all those involved for their engagement. We hope you enjoy a few snapshots from the symposium.





In The Media



Wendy Augutis shared the details of her incredible journey with CQUniversity - CQ News, December 2025 "One Small Step, A Lifetime of Change".

Wendy commenced her studies with the Skills for Tertiary Education Preparatory Studies in 2002, then going on to achieve a Bachelor of Biomedical Science (2003-2006), a Bachelor of Nursing (completed in 2016) and a Master of Research completed in 2023 – all through CQUniversity.

Professor Tracy Flenady provided an update on the work of the *Research Ready Grant Program*, in an online publication "Training in Teams: Building Research Capability Together". The Program, delivered in partnership with health services, has engaged hundreds of clinicians and supported dozens of clinician-led projects across regional, rural and remote Australia.



Dr Chanchal Kurup has been incredibly busy, working hard to ensure her research reaches wide audiences and makes an impact. Chanchal's PHD work was profiled in the Australian Catholic University annual report. Chanchal, pictured here with the Honourable Jeanette Young AC PSM, was recently nominated for the 2025 Multicultural Queensland Awards, receive a highly commended award! This was featured in our CQU staff spotlight- well done Chanchal in caring for the community.

Outstanding Contribution by a New Queensland: Dr Chanchal Kurup

Dr Chanchal Kurup is a researcher, educator and policy influencer advocating for Internationally Qualified Nurses (IQNs) in Australia.

Dr Kurup works to address the systemic underutilisation of their skillsets, and the problems of bias in recruitment processes. Her main focus is helping healthcare organisations to make more informed and equitable hiring decisions and ensuring internationally trained nurses are best able to use their skills to benefit the Queensland healthcare system.



Associate Professor Xanthe Weston has a strong media presence, providing expert criminology commentary on various cases. Her work aims to enhance law enforcement efforts. Xanthe has more than one hundred media citations for 2025.

Coverage that garnered high engagement and reach across the year pertained to Erin Patterson’s mushroom murder case, the study that found couples who use emojis in text messages feel closer and Victoria’s crime wave.

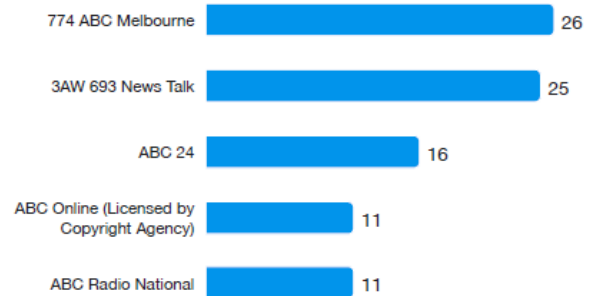
AVE by news media type

Jan 1, 2025 - Dec 31, 2025



Top publications by mentions

Jan 1, 2025 - Dec 31, 2025



Dr Raquel Peel has an impressive media presence, with many media mentions and segments. Dr Peel is an internationally recognised relationship expert, active across social media, advocating for healthier and stronger relationships. She is a regular guest at LifeMatters. Most recently, she shared insights in an interview on maintaining committed relationships long-term, managing a high-profile relationship breakup while parenting, and prioritising mental health and well-being to heal and rebuild post separation.

A snapshot **Dr Raquel Peel’s** media appearances:

- Lessons from an 80-year love affair – Interview with Triple J – 18 June 2025
- 11 things you and your partner must talk about – Financial Review 13 July 2025
- How to move on after a relationship breakup – Interview with Life Matters (ABC Radio National 21 July 2025
- Why do we sabotage love? TED xShorts – 5 November 2025

Associate Professor Xanthe Weston and **Dr Raquel Peel** also co-authored an article in The Conversation – 30 April 2025
Locked up for life? Unpacking South Australia’s new child sex crime laws.

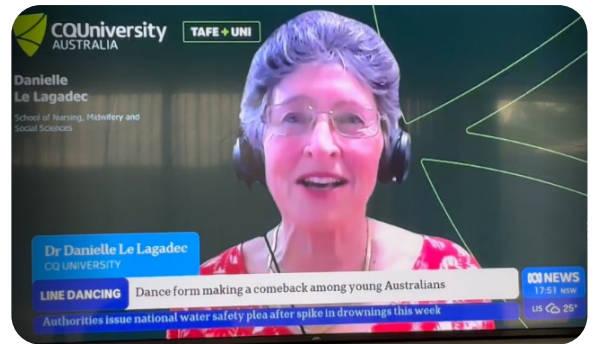


Dr² Danielle Le Lagadec was interviewed by Ruth Brown, the managing editor of New Zealand Listener, a NZ current affairs magazine. They are publishing a special issue called the Book of the Brain, and Ruth interviewed Danielle for an article on the mental health and cognition benefits of knitting. The research, conducted by Danielle, Professor Michelle Cleary and Dr Colleen Johnston-Devin was published in Issues of Mental Health Nursing on the mental health and well-being impact of needle craft. The article proved very popular with 11,200 reads and an Altmetric of 121.

Dr² Danielle Le Lagadec and **Associate Professor Catherine Hungerford** had astounding success through their piece in The Conversation *Five Health Benefits of Line Dancing – According to Science* 13 November 2025.

The benefits are:

1. It's a workout - Line dancing is good exercise: it incorporates coordination and balance with a cardiovascular workout.
2. Good for Mental Health - you don't even have to participate to feel the benefits. There is evidence to suggest watching dancing can stimulate some of the body's mood-boosting responses and reduce stress.
3. It's social – but you don't need a partner - Compared to partnered types of dance such as ballroom, line dancing might seem like a solitary activity. But this actually means people can show up alone and still connect with others, uniting around an activity.
4. A workout for your brain – studies have shown that, as line dancers become more proficient, their memory and brain function improves.
5. Line dancing builds community – many line dancers say that it has led them to become more engaged in the community, including volunteering.



Professor Sarah Wayland was featured across multiple platforms discussing her research on missing persons:

- 612 ABC Brisbane – Breakfast with Craig Zonca and Loretta Ryan (5 June 2025): Sarah spoke about her work in missing persons cases and her role in Social Work at CQUniversity. .
- ABC Online (4 June 2025): Provided expert commentary in the coverage of missing teenager Phoebe Bishop, offering insights into the broader context of missing persons cases in Australia.
- RTÉ (Ireland): *What happens to the families of missing people?* – A thoughtful contribution exploring the long-term effects on families left behind.

The SNMSS continues to **drive meaningful research across the health and social spheres.** Congratulations to all staff and candidates on a successful 2025 of media engagement.



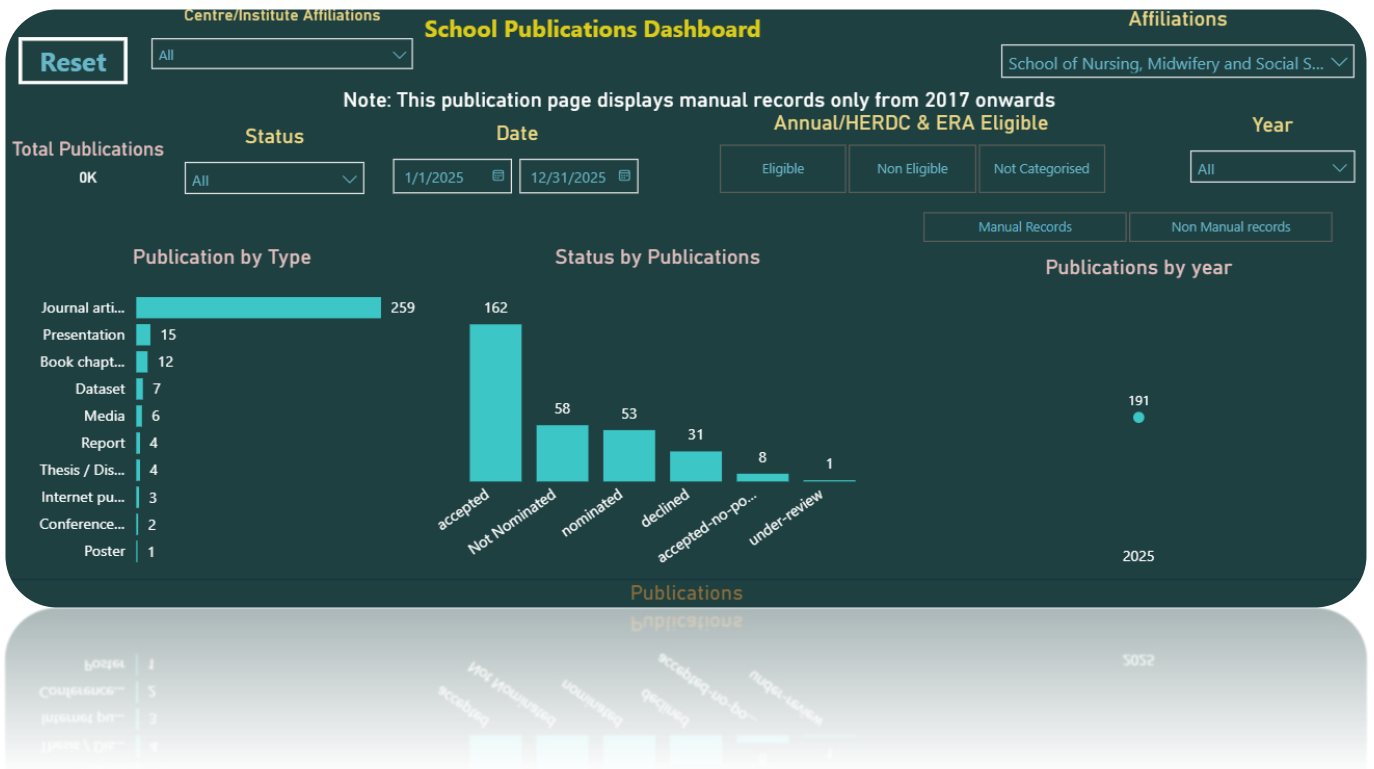
Our Performance

Research Grants

The School of Nursing, Midwifery and Social Sciences leads a diverse portfolio of innovative research projects. These projects strengthen our commitment to improving safety, quality, and well-being across healthcare and communities. In 2025, the SNMSS applied for \$8.74 million dollars in competitive grant funding, successfully obtaining \$5.42 million.



In line with our grant success, the School celebrates marked success through journal publications.



Spotlight

QUEENSLAND CENTRE FOR DOMESTIC AND FAMILY VIOLENCE (QCDFVR)

The Centre's research and evaluation projects aspire to make a social impact. Their work is supported by practice and cultural wisdom from frontline partners and shaped by the voices of those with lived experience. Sustained funding from the Queensland Government and investment by CQUniversity enable the Centre to work across three areas - Research, Sector Support and Education.

Research

QCDFVR has continued to work with the community to undertake innovative and impactful research that improves the safety of women and their children. Their work has involved regional, state, national and international collaborations. Projects continued, initiated or completed include:

- Brief Intervention Trial – Artefact Development and Online Intervention Trial – Artefact development. **Dr McDermott, Associate Professor Heather Lovatt** and **Colleen Gunning**, in collaboration with Anglicare Southern Queensland, have completed the development of a suite of artefacts for a brief intervention trial targeting adults using domestic and family violence. This co-designed program model will guide implementation, evaluation and potential scale up of this important intervention.
- Evaluation of the expansion and enhancement of integrated services responses and High Risk Teams. **Dr McDermott, Jamie Anderson and Associate Professor Lovatt**. The Department of Justice and Attorney-General (DJAG) has supported a number of enhancements to the Queensland domestic and family violence integrated service system aimed at ensuring consistent approaches to identifying, assessing, and responding to DFV. Initiatives include revising the Common Risk and Safety Framework and Information Sharing Guidelines, increasing funding for High-Risk Teams (HRTs) and additional membership (i.e. Victim Assist, Court Support), along with new roles for First Nations Cultural Advisors at some HRT sites to increase cultural capability. DJAG has commissioned the QCDFVR to conduct an independent evaluation.
- Evaluation of the "Break the Cycle" Trial. **Associate Professor Lovatt, Dr McDermott, Suewellyn Kelly and Elizabeth Boardman**. *Break The Cycle* (BTC) is a trial project being delivered by DVAC in Ipswich and YFS in Logan. The project supports boys and young men aged 12 to 18 who have experienced domestic and family violence (DFV) and are using or at risk of using family, domestic and sexual violence (FDSV).
- Evaluation of the Emerging Practitioner Pilot Program (WorkUP). **Associate Professor Lovatt, Dr McDermott, Suewellyn Kelly and Colleen Gunning**. The 2025 Emerging Practitioner Pilot Program delivered by WorkUP Queensland is designed to support emerging practitioners in the specialist domestic and family violence, sexual violence, and women's well-being sector. Through a blend of workshops, online training, Community of Practice, one-on-one support, and self-care and reflective practice, the program aims to support emerging practitioners to navigate the complexities of the sector while fostering professional development.
- Child Protection DFV Capability Uplift – Stage 1. **Adjunct Research Fellow Dr Vicki Lowik, Associate Professor Lovatt, Dr McDermott**. As part of the Domestic and Family Violence (DFV) Capability Uplift Project, the Queensland Centre for Domestic and Family Violence Research (QCDFVR) was tasked with conducting a Scoping Review of DFV-informed child protection frameworks and models of practice in Australia and specific international jurisdictions.
- Evaluation - Greater Whitsunday Care Alliance Initiative. **Dr Liane McDermott and Ruby Smith** completed an evaluation of the Greater Whitsunday Communities Care Alliance—a local initiative which aimed to support care workers within the Isaac, Mackay, and Whitsunday region through the delivery of professional development and psycho-social safety and well-being programs, and resource sharing and collaboration among care industry leaders.

- Evaluation of collaborative domestic and family violence approaches between the domestic and family violence sector and Queensland Police Service. **Associate Professor Heather Lovatt, Dr Liane McDermott, Dr Galina Williams, Jamie Anderson,** and Robyn Cathcart, were successful in a state government tender to evaluate collaborative domestic and family violence approaches between the DFV sector and Queensland Police Service. The multi-phase evaluation will be conducted from September 2025 to September 2027.



Sector Support

Throughout 2025, QCDFVR continued to strengthen the capacity and capability of the domestic, family and sexual violence sector across Queensland. Their sector support work ensures research evidence is translated into practice and that practitioners have access to the tools, networks and guidance they need to deliver safe, effective responses.

Queensland Indigenous Family Violence Prevention Forum

- **126** participants from around Queensland gathered in Mackay
- **47** delegates joined the forum virtually
- The majority (**80%**) of attendees identified as indigenous
- The event again saw a healthy proportion of male delegates (**23%**) in attendance
- **100%** of attendees strongly agreed or agreed that they gained new knowledge at the Forum
- The theme "Strength in Unity" fostered collaboration and shared purpose across services.



Engagement

As well as our colleagues within the School of Nursing, Midwifery and Social Sciences, QCDFVR engages with partners to support projects, provide advice and share knowledge.



Associate Professor Heather Lovatt with the book created by the Queensland Sexual Assault Network, featuring artwork from survivors who took part in art workshops across Queensland. Each artwork reflects this year's Sexual Violence Awareness Month theme "Together We can".

Associate Professor Lovatt, Dr McDermott, Adjunct Research Fellow Vicki Lowik with Lucy Lord, CEO, Red Rose Foundation. QCDFVR and Red Rose have signed an MOU to continue research in the critical area of non-fatal strangulation, within domestic and family violence.



Mark Walters presented the findings from his thesis "Who are you? Characteristics of DFV offenders who strangle their intimate partner: A document analysis" at the Services and Practitioners for the Elimination of Abuse Qld Forum in November.

Mark completed his Master of Research studies in 2025

Supervisors: Associate Professor Heather Lovatt, Professor Anabelle Taylor, Dr Lyndal Sleep.

Congratulations Mark, and QCDFV on this important conferral!

Education and Training

In 2025, QCDFVR strengthened workforce capability across the domestic, family, and sexual violence sector through a diverse program of professional learning. Their offerings ranged from postgraduate courses and micro-credentials to tailored workshops, ensuring practitioners at all career stages could access relevant, evidence-informed learning.

This year, the free training modules were updated on the QCDFVR website (see www.noviolence.org.au/learn), making DFV education accessible to the broader workforce.



E. qcdfvonline@cqu.edu.au

P. 07 4940 3320

www.noviolence.org.au f c i

Mission Statement: Preventing and responding to, gendered violence through research, education and service system support.

A woman with curly hair is smiling while sitting at a desk with a laptop and an open notebook. The background shows two framed abstract artworks. The entire image is overlaid with a semi-transparent green filter and a large, light-colored geometric shape that resembles a stylized letter 'A' or a similar symbol.

Higher Degree by Research

Higher Degree by Research

COMPLETIONS 2025

Graduate Certificate in Research

CANDIDATE	SUPERVISOR(S)
Danyelle Burns – Graduated with Distinction	Associate Professor Catherine Hungerford
Divya James – Graduated with Distinction	Associate Professor Leanne Jack
Lucinda Brown	Professor Pauline Calleja, Dr Danielle Le Lagadec and Dr Elizabeth Foster
Nicole Jensen – Graduated with Distinction	Professor Eileen Willis and Dr Lorraine Thompson
Ponnamperumage Fernandi – Graduated with Distinction	Dr Colleen Johnston-Devin
Teresa Reed – Graduated with Distinction	Dr Lydia Mainey
Tzu-Ping (Emily) Ou– Graduated with Distinction	Dr Helen Hickson

Master of Research/Master of Health Sciences

CANDIDATE	THESIS TITLE	SUPERVISOR(S)
Alisa Stimson	Why Weight? Development of a tool to identify factors affecting participation of women in resistance exercise.	Professor Amanda Henderson, Dr Carina Anderson (adjunct) and Dr Anne-Marie Holt (adjunct)
Carman Barnard	Attitudes of rural and remote nurses working in general settings towards consumers who engage in non-suicidal self-injury.	Associate Professor Julie Bradshaw and Dr Sue Hunt (adjunct)
Patricia Channell	Experiences of Registered Nurses Working in Residential Aged Care Facilities–A Narrative Inquiry.	Dr Ashlyn Sahay, Professor Eileen Willis, Dr Anita De Bellis (external)
Annette Horton	Sepsis Recognition in the Older Adult: A non-clinical perspective.	Supervisors: Professor Tracy Flenady and Professor Deb Massey (external)
Mark Walters	Who are you? Characteristics of DFV offenders who strangle their intimate partner: a document analysis.	Associate Professor Heather Lovatt, Professor Anabelle Taylor (adjunct), Dr Lyndal Sleep
Samantha Walsh	Preregistration nursing students’ motivation to communicate for safety and their lived experience of using graded assertiveness to speak up during work-integrated learning.	Dr Sandra Walker, Professor Lisa Wirihana

Doctor of Philosophy

CANDIDATE	THESIS TITLE	SUPERVISOR(S)
Dr Janneka Banks	Compassion Fatigue Among Australian Oncology Nurses Caring for Adult Cancer Patients: A Mixed-Methods Study.	Professor Michelle Cleary, Professor Violeta Lopez (adjunct), Dr Ashlyn Sahay and Dr Deependra Thapa (adjunct)
Dr Princess Villamin	Retention of migrant nurses in Regional Western Australia: A qualitative descriptive study.	Professor Michelle Cleary, Professor Violeta Lopez (adjunct) and Dr Deependra Thapa (adjunct)
Dr Gowrie Krishnan	Fearless one: A feminist media analysis of the rape and murder of Jyoti Singh and its aftermath.	Dr Helen Hickson and Dr Amy-Louise Byrne
Dr Johanna Rhodes	A theory of coexistence: healthcare educators assuming simulated patient roles—a grounded theory study.	Emeritus Professor Kerri Reid-Searle, Associate Professor Adele Baldwin, Professor Tracy Levett-Jones (external)
Dr Justine Connor	Acknowledging: a classic grounded theory explaining how nurses' employ clinical judgement when complying with early warning system protocols.	Professor Tracy Flenady, Emeritus Professor Trudy Dwyer, Professor Deb Massey (external)
Dr Costantinos (Kosta) Tabakakis	Psychological Resilience in New Zealand Nurses: The role of the Workplace.	Associate Professor Julie Bradshaw, Professor Margaret McAllister (external) and Dr Ashlyn Sahay



Research Higher Degree

ENROLLED CANDIDATES

Graduate Certificate in Research

CANDIDATE	SUPERVISION(S)
Danielle Stranieri	Dr Katrina Lane-Krebs
Darryl Harris	Dr Katring Lane-Krebs
Dean Nguyen	Dr Deepa Rijal
Deborah Richards	Dr Katrina Lane-Krebs
Eriko Ichinohoe	Dr Katrina Lane-Krebs
Holly Kirwin	Dr Shannon Dhollande
Jade Carrol	Dr Helen Hickson
Julie Privett	Dr Robyn Kemble Dr Katrina Lane-Krebs
Michael Pemberton	Dr Jen Mulvogue
Michelle Lin	Dr Agnieszka Sobolewska
Paul Odoemena	Associate Professor Catherine Hungerford
Rebecca Raven	Associate Professor Tanya Capper
Robyn Cathcart	Associate Professor Heather Lovatt
Temitope Cole	Dr Danielle Le Lagadec
Thulani Nkomo	Dr Katrina Lane-Krebs Dr Jen Mulvogue
Yaleela Savage-Torrens	Professor Yvonne Cadet-James

Master of Research

CANDIDATE	SUPERVISION TEAM	TITLE
Andrew Burton	Dr Anne-Marie Holt Professor Ritesh Chugh	Men with paedophilic and haebepilic interests: Offence prevention based on the Prevention Project Dunkelfeld (PPD)
Elizabeth Boardman	Dr Lyndal Sleep Dr Helen Hickson	Communities of Practice (CoP) as a protective factor against the impact of vicarious trauma (VT) on specialist domestic and family violence (DFV) practitioners
Emily Nicol	Dr Amy-Louise Byrne Dr Shannon Dhollande Professor Eileen Willis	Who are they? The role of paid Undergraduate Students in Nursing students (USiN's) in Emergency Departments
Emma Menzies	Dr Susan Rockloff Dr Cassie Dittman Dr Carina Anderson	Influencing Australian consumers' attitudes to meat consumption: Use of an educational intervention about land clearing and biodiversity loss

Jing Fang	Professor Amanda Henderson Dr Frederick Graham	Exploring nurses' understanding of behavioural events in hospital patients with dementia and/or delirium and the approach taken to these patients with reported incidents in the hospital settings
Neelam Adhikari Neupane	Professor Tracy Flenady Professor Lisa Wirihana Dr Chanchal Kurup	Exploring how culturally safe care is understood and delivered to the immigrant residents in the Residential Aged Care Facilities (RACFs): Perspective of family members of immigrant resident and healthcare workers
Mei-Lan Liu	Professor Sarah Wayland Associate Professor Leanne Jack Dr Ainslie Hall	Comparing the Taiwanese and Australian approaches to aged care among older populations
Michelle Broad	Dr Anne-Marie Priest Associate Professor Heather Lovatt	Beyond Grades and Direct Entry: Understanding the 'Hidden' Outcomes of Enabling Education
Sefunmi Odetola	Dr Ashlyn Sahay Professor Eileen Willis Dr Katrina Lane-Krebs	Pharmacist-Led Deprescribing in Residential Aged Care Facilities: An Exploratory Study

Doctor of Philosophy

CANDIDATE	SUPERVISION TEAM	TITLE
Adeniyi Adeleye	Dr Shane Hopkinson (Adjunct) Associate Professor Adele Baldwin	<i>Lost capitals, new frontiers: The work-life transition experiences of Nigerian-educated nurses in Australia</i>
Alan Zana	Dr Ashlyn Sahay Dr Sam Fien Dr Robyn Preston Professor Eileen Willis	<i>From Employment Barriers to Work Motivation: Examining the Medical, Social, and Biopsychosocial Models in the Australian Context</i>
Aldon Delpont	Dr Amy-Louise Byrne Dr Amy Johnson Associate Professor Derrick Tin (external)	<i>The emergence of high-threat medicine as a response to the threat of intentional mass violence, lone wolf and extremist terrorism in Australia</i>
Alexandra Shine	Dr Amy-Louise Byrne Professor Eileen Willis	<i>Ethical Governance and Decision-Making in Nursing: A Theoretical Investigation of Augmented Intelligence Programs and Clinical Nursing Practice</i>
Anne Nolan	Dr Susan Rockloff Dr Carina Anderson Professor Alex Russle	<i>Tackling eco-anxiety: using tree planting to offset transport emissions in the Noosa Shire</i>
Annette Horton	Professor Tracy Flenady Professor Deb Massey Dr Justine Connor	<i>Navigating Change: A Classic Grounded Theory Study of Nurses' and Midwives' Main Concerns During Healthcare Reform</i>
Carli Shaw	Associate Professor Adele Baldwin Dr Carina Anderson	<i>How does cancer related cognitive impairment impact a patient's daily life after receiving chemotherapy?</i>

Carmen Barnard	Associate Professor Julie Bradshaw Dr Ashlyn Sahay Dr Jen Mulvogue	<i>Navigating distress: Nursing academics' perceptions of distressing student communication and institutional characteristics</i>
Chantel Sando	Professor Paulien Calleja (Adjunct) Dr Amy-Louise Byrne	<i>How does local knowledge inform organisational response to disaster in the rural health service?</i>
Christopher Kingswell	Professor Pauline Calleja (Adjunct) Dr Ashlyn Sahay	<i>Emergency Triage in Australia: the Patient Safety of a Clinical Practice</i>
Colleen McGoldrick	Associate Professor Julie Bradshaw Emeritus Professor Moira Williamson Professor Colin Holmes Dr Ashlyn Sahay	<i>The relationship between self, identity, and the experience of living with COPD</i>
Danielle Rogers	Professor Pauline Calleja Dr Ashlyn Sahay Dr Amy-Louise Byrne	<i>Providing emergency care in rural and remote facilities; what are the needs of non-emergency trained registered nurses</i>
Divya James	Associate Professor Leanne Jack Dr Ainslie Hall	<i>Differentiating Emergence Postoperative Delirium from Pre-existing Dementia: Understanding Registered Nurses' Knowledge and Assessment Practices in the Post Anaesthetic Care Unit</i>
Donna Bloice	Professor Clare Harvey (Adjunct) Associate Professor Adele Baldwin	<i>Who cares about the health of female former prisoners? A proposed hermeneutic-phenomenological inquiry</i>
Frances Calleja	Professor Tracy Flenady Professor Amanda Henderson	<i>How are constituent elements of positive practice environments operationalised in rural and remote healthcare contexts</i>
Jacqueline Hurren	Professor Annabel Taylor (Adjunct) Professor Hillary Haldane Dr Brian Sullivan	<i>The lived experience of women whose partners/ex-partners are Australian Defence Force (ADF) veterans diagnosed with post traumatic stress disorder (PTSD)</i>
Jennifer Basset	Professor Amanda Henderson Associate Professor Adele Baldwin Associate Professor Jane Frost	<i>Learning interactions; the memorable nursing moments: A grounded theory study</i>
Jessica McLellan	Dr Ashlyn Sahay Associate Professor Julie Bradshaw Associate Professor Lauren Miller-Lewis	<i>Exploring the Effectiveness of a Dialectical Behavioural Therapy skills program on Australian Defence Force Veterans' Mental Health Outcomes</i>
Katrina Vukovic	Emeritus Professor Moira Williamson Associate Professor Leanne Jack	<i>The Lived Experience of People who Leave a Mental Health Treatment Facility without Permission</i>
Kerri Jackson	Associate Professor Anthony Welch Dr Shane Hopkinson Dr Ashlyn Sahay	<i>A sense of kinship Peer work in suicide prevention and intervention services</i>

Lauren Stephenson	Professor Sarah Wayland Professor Myfanwy Maple	<i>Together in comprehensive suicide prevention: Exploring the lived experience of suicide in a multi sectoral higher education context</i>
Lindy Sherring	Dr Susan Rockloff Dr Katrina Lane-Krebs	<i>Fostering the Intellectually Disabled Child: Socialisation Processes and Motivational Dynamics of Foster Parents</i>
Madonna Chesam	Dr Helen Hickson Dr Davina Taylor	<i>How do young adults in Australia experience a recent diagnosis of epilepsy and navigate its influence on various areas of their lives, including identity, relationships, employment and education?</i>
Mariyam Salwa Shiyam	Dr Lyndal Sleep Dr Liane McDermott Associate Professor Heather Lovatt	<i>Gendered Violence and Migration: Investigate the gender dimensions of migration, including the specific challenges faced by female migrants in the Maldives</i>
Mark Prance	Associate Professor Julie Bradshaw Dr Lydia Mainey Professor Colin Homles	<i>What was the impact of flight nurses in remote Australia 1928-1978 and how significant was their role in treating illnesses and promoting health in remote Australia?</i>
Megan Wise	Professor Amanda Henderson Dr Pammie Ellem Dr Christine Ossenbergl	<i>Determining the factors during the pre-registration program of study and initial employment that assist workplace performance upon employment as a registered nurse</i>
Muriel Wymarra	Professor Janya McCalman Dr Helen Hickson Dr Vicki Pascoe	<i>Working together with Torres Strait Islander People: Understanding the practice of professional helping in Torres Strait culture</i>
Nadine Dowdell	Professor Sarah Wayland Dr Natasha Hawkins Dr Mim Fox	<i>Exploring the Transition into Leadership for Health based Social Work in Australia</i>
Nick Nijkamp	Professor Pauline Calleja (Adjunct) Dr Ashlyn Sahay Associate Professor Leanne Jack	<i>Evaluation of the Transition to Practice Programs (TPP) for New Graduate and Novice Perioperative Nurses</i>
Rachelle Chee	Associate Professor Tanya Capper Professor Olav Muurlink	<i>The use of social media/influencers to transmit health and related information to new mums</i>
Shunil Raina	Associate Professor Julie Bradshaw Professor Lisa Wirihana	<i>The lived experience of mental health nurse academics in Australian universities: A hermeneutic phenomenological study</i>
Siju Adhikari	Associate Professor Leanne Jack Professor Eileen Willus Dr Ainslie Hall	<i>Identifying strategies that influence Registered Nurses to specialise in residential aged care nursing</i>
Stacey Pollard	Dr Lyndal Sleep Dr Helen Hickson Dr Liane McDermott	<i>A qualitative exploration of women's transition to safety from Family Domestic Violence</i>

Stanley Lenoy	Professor Sarah Wayland Dr Shirley Ledger Dr Vinnita Mosby	<i>Preparing Nations for (re)-building and collective governance - developing strengths-based, place-based and cultural-based community health needs to inform a national set of safety and quality standards</i>
Tracey Bell	Professor Tracy Flenady Professor Eileen Willis Dr Madeline Spracjer	<i>The Impact of Nurse Fatigue on Medication Administration Errors and Near Misses in Acute Care Settings</i>
Tracey Simes	Professor Amadna Henderson Professor Bobby Harreveld	<i>An Ethnography of the 'Borderlands': The Academic in the Contested Space of Student Clinical Placements</i>
Tzu-Ping (Emily) Ou	Dr Helen Hickson Dr Agnieszka Sobolewska	<i>Exploring Critical Reflection in Social Work Education: International Students' Cross-Cultural Experiences in Australia</i>

Doctor of Philosophy Industry

CANDIDATE	SUPERVISION TEAM	TITLE
Elizabeth Archibong	Professor Eileen Willis Dr Frank Baffour	<i>Exploring perceptions and attitudes of Sub-Sahara African migrants towards residential aged care in Australia</i>
Jaqueline King	Dr Raquel Peel Associate professor Xanthe Mallett	<i>Estrangement as Survival: Navigating Boundaries, Identity, and Emotional Recovery After Childhood Coercive Control and Cumulative Family Abuse</i>
Kate Robinson	Professor Eileen Willis Professor Vicki Saunders	<i>A comparison and evaluation of the curriculum design, delivery, uptake and efficacy of university units that teach Cultural Safety to undergraduate nurses</i>
Kelly Marlow	Dr Lyndal Sleep Dr Liane McDermott Associate Professor Heather Lovatt Dr Nicola Cheyne	<i>Victim/Survivors Experiences of Intimate Partner Sexual Violence When Pornography is Involved</i>



Publications

Publications

STAFF AND RESEARCH HIGHER DEGREE CANDIDATE OUTPUTS FOR 2025

- Addae, H.Y., Tahiru, R., Alhassan, A., **Fuseini, A-G.**, Iddrisu, M., Mensah, W.W., Azupogo, F., Adokiya, M.N. (2025). Trends and determinants of the triple burden of malnutrition in Ghana; Analyses of two decades of demographic and health survey datasets. *PLOS Global Public Health*. 5, 1-8. <https://doi.org/10.1371/journal.pgph.0005078>
- Adeleye, A.**, Jennings, B., **Chee, R.**, **Ferguson, B.** (2025). Midwifery capacity building partnerships in Timor Leste. *The Practising Midwife Australia*. 4, 19-23, <https://doi.org/10.55975/RPCG6525>
- Adonteng-Kissi, O., Baffour, F.D., Mabefam, M., Meribe, N., **Archibong, E.** (2025). Human rights perspectives in social work practice with African immigrants in Australia: 'It Starts with respecting Them and Making Them Feel like Humans'. *The British Journal of Social Work*. 55, 2541-2559, <https://doi.org/10.1093/bjsw/bcaf060>
- Adonteng-Kissi, O., Mabefam, M., **Archibong, E.**, Meribe, N., Baffour, F.D. (2025). Impact of Perceived Discrimination and Social Exclusion on Well-being of Black African Immigrants in Australia. *Race and Justice*, 1-28. <https://doi.org/10.1177/21533687251356287> -
- Adonteng-Kissi, O., Mabefam, M., Meribe, N., Baffour, F.D., **Archibong E.** (2025). Social service inclusion of immigrants through the lens of human rights in Australia. *Development Policy Review*, 43, 1-1. <https://doi.org/10.1111/dpr.70021>
- Ahad, M.A., Parry, Y.K., **Willis, E.**, Ullah, S. (2025). Child maltreatment and psycho-social impairments among child laborers in rural Bangladesh. *Social Psychiatry and Psychiatric Epidemiology*. 60, 763-770, <https://doi.org/10.1007/s00127-024-02671-9>
- Ahad, M.A., Parry, Y.K., Willis, E., Ullah, S., Ankers, M. (2025). Child Laborers' Exposure to Physical Maltreatment in Rural Bangladesh: Prevalence and Risk Factors. *Asian Journal of Criminology*. <https://doi.org/10.1007/s11417-025-09453-5>
- Alavi, M., Le Lagadec, D., Cleary, M. (2025). Challenges of Cross-Cultural Validation of Clinical Assessment Measures. *Journal of Advanced Nursing*, 1-9. <https://doi.org/10.1111/jan.16906>
- Baldwin, A., Hungerford, C., Jackson, D., & Cleary, M. (2025). Respectful Rebels: Counteracting Groupthink to Foster Innovation in Nursing Academia. *Issues in Mental Health Nursing*, 1-4. <https://doi.org/10.1080/01612840.2025.2476171>
- Banks, J., Thapa, D.K., Lopez, V., Sahay, A., & Cleary, M. (2025). Compassion fatigue among Australian nurses caring for adult oncology patients: Prevalence and predictors. *European Journal of Oncology Nursing*, 74, 102792. <https://doi.org/10.1016/j.ejon.2025.102792>
- Banks, J., Lopez, V., Thapa, D.K., Sahay, A. and Cleary, M. (2025). Compassion Fatigue Among Australian Oncology Nurses Caring for Adult Cancer Patients: Antecedents, Impact and Mediators. *Journal of Advanced Nursing*, 81(9). 5984-5995. <https://doi.org/10.1111/jan.16733>
- Barnard, C., Dhollande, S., Shephard, J.** (2025). Reflections on early career nursing academic research mentorship experiences. *Nurse researcher* 1-1. <https://doi.org/10.7748/nr.2025.e1979> -
- Basset, J., Henderson, A., Baldwin, A., & Frost, A. (2025). Nurses' learning about professional interpersonal communication: Findings from an integrative review. *Nurse Education Today*, 150. 106698. <https://doi.org/10.1016/j.nedt.2025.106698>
- Batterbee, R., Bradshaw, J., Frost, A., Hunt, S.** (2025). The use of a cognitive behavioural model of reflection to facilitate transformative learning in undergraduate nursing education. The quantitative results of a mixed methods study. *Nurse Education in Practice*, 87, 1-7, <https://doi.org/10.1016/j.nepr.2025.104444>
- Bell, A., Parry, Y.K., Ankers, M., Sivertsen, N., Willis, E., Kendall, S., & Yin, H. (2025). An innovative nurse practitioner-led service for children from families living in housing instability. *Primary Health Care Research & Development* 26(e22): 1-8. <https://doi.org/10.1017/S1463423625000118>
- Beylin, D., Kornhaber, R., Le Lagadec, D. and Cleary, M. (2025), Assessing the Health Implications of UV/LED Nail Lamp Radiation Exposure During Manicure and Pedicure Procedures: A Scoping Review. *International Journal of Dermatology*, 64. 659-666. <https://doi.org/10.1111/ijd.17669>

- Beylin, D., Kornhaber, R., Le Lagadec, D., & Cleary, M. (2025). Needle Spiking: A Scoping Review on Prevalence, Motivations, and Health Outcomes. *Deviant Behavior*, 1–14. <https://doi.org/10.1080/01639625.2025.2516632>
- Beylin, D., Kornhaber, R., **Le Lagadec, D., Cleary, M.** (2025). Turning off the Ignition: A Scoping Review on the Impact of Relinquishing or Having a Driver's License Revoked on the Mental Health and Well-Being of Those Individuals Aged 65 and Older. *Issues in Mental Health Nursing*, 46, 1-13-1024. <https://doi.org/10.1080/01612840.2025.2544154>
- Biles, J., Kornhaber, R., Irwin, P., Schineanu, A., Sookraj-Baran, M.K., & Cleary, M. (2025). Perspectives, motivations, and experiences of adolescents and young adults using nicotine vapes: a qualitative review. *Health Promotion International*, 40(2). <https://doi.org/10.1093/heapro/daaf007>
- Bolton, S., Willis, E., Byrne, A-L.** (2025). The role of leadership in supporting and mitigating moral distress in nursing: A scoping review. *Journal of Nursing Management*, 2025, 1-16, <https://doi.org/10.1155/jonm/5443770>
- Bonner, A., Deravin, L., Dewar, J., Williamson, M., Gillespie, K., Atherfold, C., Nightingale, K., West, C., & Strickland, K. (2025). Aboriginal, Torres Strait Islander and Māori nursing and midwifery academic workforce across Australia and Aotearoa New Zealand. *Collegian*, 32(3). 149-154 <https://doi.org/10.1016/j.colegn.2025.03.004>
- Byrne, A-L. (2025). Two sides of the same coin: person-centred systems versus person-centred nursing practice. Theory, barriers and opportunities. *Journal of Research in Nursing*, 30(1). <https://doi.org/10.1177/17449871241255012>
- Byrne, A-L. (2025). Disease. In A. Nai, M. Gromping and D. Wirz (Eds.) *Elgar Encyclopedia of Political Communication*. Edward Elgar Publishing. <https://www.e-elgar.com/shop/gbp/elgar-encyclopedia-of-political-communication-9781035301430.html?srsId=AfmBOorXysID9-EBsVRv633iC57-Jd7MCyx9vrUESOuS1TBZmL0oSR6c>
- Byrne, A-L. (2025). Book Review- Primary Health Care and Continuous Quality Improvement. An Evidence-Based Guide By A. Laycock, L. O'Donoghue, and R. Bailie, Sydney: Sydney University Press, 2025. 392 pp. \$80.00 (paperback). ISBN: 978-1-74-332926-9. *Australian Journal of Rural Health*, 33(6). 70121. <https://doi.org/10.1111/ajr.70121>
- Byrne, A-L., Dholand, S., & Calleja, P. (2025). Articulating your research focus via a capability statement: professional development for early career researchers. *Journal of Research in Nursing*, 1-11. <https://doi.org/10.1177/174498712413>
- Byrne, A-L., Massey, D., Flenady, T., Connor, J., Chua, W.L., Le Lagadec, D. (2025). When Nurses Worry: A Concept Analysis of Intuition in Clinical Deterioration. *Journal of Advanced Nursing*, 81(8). 4566-4583. <https://onlinelibrary.wiley.com/doi/10.1111/jan.16956APA>
- Calleja, P., Flenady, T., Byrne, A-L., Wirihana, L., Scott, A., Ellem, P., Ryan, L., Sahay, A. (2025). Clinicians' experience of the research ready grant program: just-in-time learning to facilitate regional research capacity. *BMC Health Serv Res* 25, 1598 (2025). <https://doi.org/10.1186/s12913-025-13761-y>
- Cai S.; Cao Y.; Tang L.; Fu H.; **Willis E.**; Henderson J.; Roderick A. (2025). Chinese Version of Missed Nursing Care Infection Prevention and Control: Combined Classical Test Theory and Item Response Theory. *Nursing Forum*, 2025, 1-13. <https://doi.org/10.1155/nuf/8567668>
- Capper, T.**; Moran, L.; Gupta, M.; Seaman, G.; Cole, C.; Grota, T.; Riley, R.; Jacob, A.M.; Jacob, E. (2025). What are the practical challenges associated with attending professional practice placements as a healthcare student in Australia? An integrative review, *Nurse Education in Practice*, 89, 1-15, <https://doi.org/10.1016/j.nepr.2025.104609>
- Cesare, P.** (2025). Book Review- I'm Not Alone: A Teen's Guide to Living with a Parent Who Has a Mental Illness or History of Trauma, *Australian Social Work*, 79, 1-3, <https://doi.org/10.1080/0312407X.2025.2523626>
- Cesare, P.** (2025). Book Review- Loving Someone With a Mental Illness or History of Trauma: Skills, Hope, and Strength for Your Journey, *Australian Social Work*, 1-2, <https://doi.org/10.1080/0312407X.2025.2523625>
- Cleary, M. (2025). Psychiatric Mental Health Nursing: Using Our Experience to Shape Our Future Focus. *Journal of Advanced Nursing*. 1-5 <https://doi.org/10.1111/jan.16980>
- Cleary, M., Hungerford, C., Johnston-Devin, C., West, S., Jackson, D.** (2025). Keeping the 'quality' in qualitative research: Embracing technology to enhance participation in qualitative interviews, *Journal of Advanced Nursing*, 81, 1113-1115, <https://doi.org/10.1111/jan.16343>
- Cleary, M., Kornhaber, R., Le Lagadec, D., Hungerford, C.** (2025). Mastering the Discursive Paper: Balancing the Argument, *Issues in Mental Health Nursing*, 1-1, <https://doi.org/10.1080/01612840.2025.2520865>
- Cleary, M., Le Lagadec, D., Thapa, D. K., & Kornhaber, R. (2025). Exploring the Impact of Hobbies on Mental Health and Well-Being: A Scoping Review. *Issues in Mental Health Nursing*, 1–11. <https://doi.org/10.1080/01612840.2025.2512006>
- Cleary, M., Le Lagadec, D., West, S., & Kornhaber, R. (2025). ... 5, 6, 7, 8: The Many and Interrelated Benefits of Line

- Dancing – A Scoping Review. *Issues in Mental Health Nursing*, 1–11. <https://doi.org/10.1080/01612840.2025.246846>
- Connor, J., Flenady, T.,** Dwyer, T., Massey, D. (2025). Acknowledging: A classic grounded theory explaining how nurses employ clinical judgement when complying with early warning system protocols, *International Journal of Nursing Studies*, 163, 104989, <https://doi.org/10.1016/j.ijnurstu.2024.104989> -
- Connor, J., Flenady, T., Dwyer, T., & Massey, D. (2025). The Application of Classic Grounded Theory in Nursing Studies: A Qualitative Systematic Review. *Journal of Advanced Nursing*, 13. <https://doi.org/10.1136/bmjopen-2022-068588>
- Crebert, I., Seckiner, D., Nickson, R., Berezowski, V., **Mallett, X.** (2025). A comparative analysis of computed tomography, photogrammetry, and structured light scanning for biological sex estimation in forensic anthropology - A review, *Science and Justice*, 65, 1-9, <https://doi.org/10.1016/j.scijus.2025.101263>
- Cutmore, E., & Henderson, A. (2025). Shifting student attitudes of gerontology nursing: A quasi-experimental evaluation of a clinical educator programme. *International Journal of Older People Nursing*, 20, e70011. <https://doi.org/10.1111/opn.70011>
- Davis, K., Stipcevic, M., Cant, R., **Ryan, C.,** Bogossian, F. (2025). Addressing nursing student clinical placement poverty concerns: A discussion paper, *Nurse Education Today*, 144, 1-5, <https://doi.org/10.1016/j.nedt.2024.106483>
- Delpont, A., Byrne, A-L., & Johnson, A. (2025). Medical responses to intentional mass violence: an integrative review of emergency responses and victim centred insights. *Journal of High Threat & Austere Medicine*, 7(1). 8-27. <https://doi.org/10.33235/JHTAM.7.1.8-27>
- Dhollande, S., Barnard, C., & Shephard, J. (2025). Comparing reflective models within nursing education: Are they fit for purpose? *Teaching and Learning in Nursing*, 20(4). 1290-1295 <https://doi.org/10.1016/j.teln.2025.05.017>
- Dhollande, S., McDermott, L., Sleep, L.,** Sapkota, D., Meyer, S. (2025). The provision of emergency healthcare to patients experiencing intimate partner violence: A scoping review, *Australasian Emergency Care*, <https://doi.org/10.1016/j.auec.2025.10.003>
- Dhollande, S., Sapkota, D., Meyer, S., Clarke, K.-A. and Atiénzar-Prieto, M. (2025). Exploring Emergency Healthcare for Women Experiencing Intimate Partner Violence with Comorbid Psychological Distress. *International Journal of Mental Health Nursing*, 34. e70050. <https://doi.org/10.1111/inm.70050>
- Dhollande, S., Sapkota, D., & Meyer, Silke. (2025). Recognising vicarious trauma in research: the experiences of researchers who work with victimisation data and the support they need. *Nurse Researcher*. <https://www.doi.org/10.7748/nr.2025.e1952>
- Dhollande, D.S.; Shephard, J.; Barnard, C.** (2025). Reflective models used in undergraduate health programs: A scoping review, *Teaching and Learning in Nursing*, 1-8, <https://doi.org/10.1016/j.teln.2025.08.011>
- Disler, R.; Madhuvu, A.; Ly, L.; Pascoe, A.; **Hickson, H.;** Wright, J.; Subramaniam, S.; Glenister, K.; Donesky, D.; Smallwood, N. (2025). Palliative Care Training Gaps Remain in Chronic Disease Management Post-COVID-19, *Journal of Pain and Symptom Management*, 69, 569-580, <https://doi.org/10.1016/j.jpainsymman.2025.02.011>
- Dmitry, B.; **Kornhaber, R.; Cleary, M.** (2025). Psychosocial concerns in burn survivors and their families: A narrative review, *Injury*, 56, 1-9, <https://doi.org/10.1016/j.injury.2025.112626>
- Essex, R., Mainey, L., Gonzales-Walters, F., Gurnett, P., & Weldon, S. M. (2025). A scoping review of comparative healthcare codes of ethics studies. *Journal of Advanced Nursing*, 81(12). 8457-8469. <https://doi.org/10.1111/jan.16857>
- Ferguson, B., Baldwin, A., Harvey, C., & Henderson, A. (2025). Navigating Quality and Innovation: Actor-Network Theory and Hybrid Assemblages in Midwifery Practice, Implications of Maternity Early Warning Tools and Artificial Intelligence. *Nursing Inquiry*, 32(2), e70001. <https://doi.org/10.1111/nin.70001>
- Ferguson, B; **Baldwin, A.; Henderson, A.** (2025). Early warning tools and clinician 'agency' for strengthening safety culture: An integrative review, *Journal of Advanced Nursing*, 81,5234-5247, <https://doi.org/10.1111/jan.16260>
- Flenady, T., Connor, J., & Vander Linden, K. (2025). How to Conduct a Classic Grounded Theory in 12 Months: A Practical Guide for PhD Students. *International Journal of Qualitative Methods*, 24, <https://doi.org/10.1177/16094069251412256>
- Galea, G., Mainey, L., & Chugh, R. (2025). Using Grounded Theory Method in Social Media Studies: A Scoping Review. *International Journal of Qualitative Methods*, 24. <https://doi.org/10.1177/16094069251328155APA>
- Givol, O., Cleary, M., Kornhaber, R., Biro, E., Haik, J., & Klein, A. (2025). Safety and feasibility of electrospinning technology for paediatric burns: Insights from a retrospective cohort study. *Burns*, 51, 107509. <https://doi.org/10.1016/j.burns.2025.107509>
- Graham, F.A., Ossenberg, C., **Henderson, A.** (2025). A Nurse-Initiated Protocol for Interprofessional Management of Changed Behaviours in Hospital Patients With Dementia and/or Delirium: A Modified e-Delphi Study, *Journal of*

- Advanced Nursing*, 81, 4290-4305, <https://doi.org/10.1111/jan.16721>
- Groves, R., & Peel, R. (2025). Trust Difficulty in Intimate Relationships: Understanding the Impact of Insecure Attachment and Flirting Styles. *Interpersona: An International Journal on Personal Relationships*, 19(2), <https://doi.org/10.54899/ijpr.v19i2.629>
- Happell, B., Jacob, A., Furness, T., **Stimson, A.**, Curtis, J., Watkins, A., Platania-Phung, C., Scholz, B., Stanton, R. (2025). Nurse-led physical health interventions for people with mental illness: An integrative review of international literature, *Journal of Mental Health*, 45, 330-352, <https://doi.org/10.1080/09638237.2024.2390364>
- Henderson, A.** (2025). Clinical-academic positions that promote research activity and adoption of findings are dependent on clinical leadership support, *Evidence-Based Nursing*, 29, 166-166, <https://doi.org/10.1136/ebnurs-2024-104013>
- Hickson, H.** (2025). Book Review-Narratives of Domestic Violence: Policing, Identity, and Indexicality Australian Social Work, <https://doi.org/10.1080/0312407X.2025.2466795>
- Hickson, H., Kemp, K., Long, N., Sherry, H. (2025) Animal-assisted social work at Flash Farm. *Aotearoa New Zealand Social Work*, 37(1), 56–69. <https://doi.org/10.11157/anzswj-vol37iss1id1173>
- Hosking, B., Ross, L., Vivanti, A., Courtice, S., **Henderson, A.**, Naumann, F., Stoney, R. Palmer, M. (2025). Comparison of Readmission, Discharge Location and Mortality over Three Years Post-Discharge Between Patients Diagnosed with Hospital-Acquired Malnutrition and Those Malnourished on Admission—A Retrospective Matched Case–Control Study in Five Facilities. *Healthcare Switzerland*, 13, 1-11, <https://doi.org/10.3390/healthcare13040364>
- Hungerford, C. (2025). Family Carers of People with Dementia: Supporting Their Grief Journey. *Issues in Mental Health Nursing*, 1-6. <https://doi.org/10.1080/01612840.2025.2497089>
- Hungerford, C.** (2025). Response to “Beyond Being With: Disrupting the idealization of presence in mental health nursing”, *Issues in Mental Health Nursing*, 1, <https://doi.org/10.1080/01612840.2025.2516818>
- Hungerford, C., Batterbee, R., & Heslop, K. (2025). Presence in mental health nursing. *Issues in Mental Health Nursing*, 1-4. <https://doi.org/10.1080/01612840.2025.2476157>
- Hungerford, C., Blanchard, D., Hickson, H., Lovatt, H., Bernoth, B. (2025), Coercive control and older people: Towards definitional consistency. *Journal of Elder Abuse & Neglect*. <https://doi.org/10.1080/08946566.2025.2601955>
- Hungerford, C., Blanchard, D., Mulvogue, J., & Bradshaw, J. (2025): Self-Disclosure as a Therapeutic Tool. *Issues in Mental Health Nursing*, 1-4. <https://doi.org/10.1080/01612840.2025.2484597>
- Hungerford, C., Blanchard, D., Baldwin, A.** (2025). ‘White-Anting’ and Other Undermining Workplace Behaviors: Recognize and Act, *Issues in Mental Health Nursing*, <https://doi.org/10.1080/01612840.2025.2553172>
- Hungerford, C., Jackson, D., & Cleary, M. (2025), Constructive Resistance: Essential to Optimise Workplace Quality. *Journal of Advanced Nursing*, 81. 6071-6073. <https://doi.org/10.1111/jan.16918>
- Hungerford, C., Jackson, D., & Cleary, M. (2025). Navigating High-Stakes Interviews: Strategies for Mental Health Nurses in Competitive Job Markets. *Issues in Mental Health Nursing*, 1-3. <https://doi.org/10.1080/01612840.2025.2489633>
- Hungerford, C.; Jackson, D.; Cleary, M.** (2025). Quiet quitting, resentment and other forms of disengagement: What are the answers for nurses? *Journal of Advanced Nursing*, 81, 2885-2857, <https://doi.org/10.1111/jan.16574>
- Hungerford, C., Kornhaber, R., West, S., & Cleary, M. (2025). Autism, Stereotypes, and Stigma: The Impact of Media Representations. *Issues in Mental Health Nursing*, 1–7. <https://doi.org/10.1080/01612840.2025.2456698>
- Hungerford, C.; Mulvogue, J.; Morris, C.; Bradshaw, J.** (2025). Fostering a sense of belonging: Supporting psychosocial well-being, *Issues in Mental Health Nursing*, 46, 211-214, <https://doi.org/10.1080/01612840.2024.2391850>
- Hungerford, C.L.** (2025). Boundaries in Health Settings: A Discursive Paper, *Issues in Mental Health Nursing*, 46, 958-965, <https://doi.org/10.1080/01612840.2025.2551686>
- Irwin, P., Rehman, S. U., Fealy, S., Kornhaber, R., Matheson, A., & Cleary, M. (2025). Empowering nurses – a practical guide to artificial intelligence tools in healthcare settings: discussion paper. *Contemporary Nurse*, 1–11. <https://doi.org/10.1080/10376178.2025.2459701>
- Jackson, D., & **Cleary, M.** (2025). Choosing Well: What to Look for in Mental Health Nursing Graduate Programs, *Issues in Mental Health Nursing*, 1-5, <https://doi.org/10.1080/01612840.2025.2546267>
- Jackson, D., Le Lagadec, D. and Cleary, M. (2025), Hypoactive Delirium: The Critical Need for Collaboration Between Families and Nurses in Prevention, Recognition and Care. *Journal of Advanced Nursing*, 81(5). <https://doi.org/10.1111/jan.16778>
- Jackson, D., Smith, G.D. and Cleary, M. (2025), The Privilege and Power of Peer Review: Advancing Science with Integrity, Vigilance and Fairness. *Journal of Advanced Nursing*, online first. <https://doi.org/10.1111/jan.70060>
- Jackson, D., Cleary, M., & Usher, K. (2025). Australia’s Mental Health Landscape: Collaborating Across Professions to

- Advocate for Equitable and Well-Resourced Mental Health Care. *International Journal of Mental Health Nursing*, 34(2), e70041. <https://doi.org/10.1111/inm.70041>
- Jackson, B., Wayland, S., Ball, S. A., & Maple, M. (2025). Measuring What Outcomes Matters Most to People When Accessing Suicide Postvention Support: A Qualitative Study. *Community Mental Health Journal*, 1-11. <https://doi.org/10.1007/s10597-025-01452-1>
- Johnston-Devin, C.,** Beccaria, L., **Cousins, M., Baldwin, A.,** Du Preez, P.H., **Lane-Krebs, K.** (2025). Do No Harm: Nursing Students' Knowledge and Attitudes Toward Pain Management, *Pain Manag Nurs*, <https://doi.org/10.1016/j.pmn.2025.10.012>
- Johnston-Devin, C., West, S., Oprescu, F., Lane-Krebs, K., & Cleary, M. (2025). The evolution of informational needs of people with complex regional pain syndrome. *Pain Management Nursing*, 26(5), 456-463. <https://doi.org/10.1016/j.pmn.2025.04.010>
- King, J., Cappiello, J., Mainey, L., Dean, J., Balnaves, M. C., Peberdy, L., Peacock, A., & Downing, S. (2024). A descriptive cross-sectional online survey of nursing and midwifery students and graduates' readiness to provide unplanned pregnancy and abortion care. *Contemporary Nurse*, 1-15. <https://doi.org/10.1080/10376178.2024.2432626>
- Kingswell, C. J., Calleja, P., & Sahay, A. (2025). The Impact of Emergency Triage Practices on Patient Safety: A Scoping Review Protocol. *Journal of Emergency Nursing*, 51(3), 498-503. <https://doi.org/10.1016/j.jen.2024.12.002>
- Kornhaber, R., Mc Kittrick, A., Rossiter, R., & Cleary, M. (2025). Pain experiences in adult burn survivors during rehabilitation and recovery: A qualitative systematic review. *Journal of Burn Care & Research*, 46(4), 818-832. <https://doi.org/10.1093/jbcr/iraf031>
- Kurup, C., Burston, A.S., Betihavas, V., Jacob, E.R. (2025). Exploring the Utilisation of Internationally Qualified Nurses' Specialty Skills: Analysis of Recruiting Managers' View Points. *Nursing Open*, 12(3):e70184. <https://doi.org/10.1002/nop2.70184>
- Le Lagadec, M. D.,** Massey, D., **Byrne, A.-L., Connor, J., & Flenady, T.** (2025). Nurse by numbers: The impact of early warning systems on nurses' higher-order thinking, a quantitative study. *Journal of Advanced Nursing*, 81, 5342-5352, <https://doi.org/10.1111/jan.16235>
- Ledger, S., Hickson, H., McNamara, J., Kemble, R., Chesham, M., Sobolewska, A., Cesare, P., & Anderson, J. (2025). Community focused learning (CFL) living lab: Innovating service delivery through evidence-based practice. In M. Jarldorn & C. Hudson (Eds.), *Tutorial ideas for educators on the run: Innovative and engaging teaching activities* (pp. 95-103). Springer Nature Singapore. https://doi.org/10.1007/978-981-96-4349-3_11
- Lowe, P., Jakimowicz, S., Levett-Jones, T., Baldwin, A. & Stern, C. (2024). Using a hybrid Delphi-nominal group technique to develop a tool for appraising the quality of mixed-method grounded theory research. *Nurse Researcher*. <https://doi.org/10.7748/nr.2024.e1947>
- Lowik, V., Cheyne, N., **Lovatt, H.** (2025). "He's been trying to get me ...": The lived experience of survivors of intimate partner strangulation after leaving the abusive relationship, *Journal of Family Violence*, 40, 529-539, <https://doi.org/10.1007/s10896-023-00664-x>
- MacAndrew, M., Sriram, D., Chambers, S., Spooner, A., Schnitker, L., Jack, L., Ytes, P., Beattie, E., & Parker, C. (2025). Detection of Acute Deterioration in Care Home Residents: A Multicentre Qualitative Exploration of Barriers and Enablers. *Journal of Nursing Scholarship*, 57(4), 576-586. <https://doi.org/10.1111/jnu.70005>
- Mainey, L., Essex, R., Gurnett, P. and Richardson, S. (2025), Stirring the Sleeping Giant? an Evaluation of a Planetary Health Political Action Sequential Simulation for Nursing Students. *Nursing Inquiry*, 32: e70017. <https://doi.org/10.1111/nin.70017>
- Massey, D., **Flenady, T., Byrne, A.-L., Connor, J., Le Lagadec, D.** (2025), 'White lies and safety nets': The perceptions of nurses on the use of early warning systems and the development of higher-order thinking skills, *Australian Critical Care*, 38, 1-6, <https://doi.org/10.1016/j.aucc.2024.04.007>
- Mulvogue, J., Byrne, A.-L., Delpont, A., & Raina, S. (2025). 'Motives unknown': A critical discourse analysis of the Bondi attack – terrorism, mental health or misogyny? *Psychology of Women and Equalities Review*, 8(2). <https://doi.org/10.53841/bpspowe.2025.8.2.6>

- Mulvogue, J., Ryan, C.L., Willis, E., Forbes, V. and Harvey, C. (2025), What Is Known About the Intended or Unintended Homicide of One Resident Causing the Death of Another in Residential Aged Care Facilities? An Integrated Review of International Studies. *Nursing Inquiry*, 32: e70009. <https://doi.org/10.1111/nin.70009>
- Nijkamp, N., Calleja, P., Sahay, A., & Jack, L. (2025). Evaluation of the Transition-to-Practice Arrangements for Novice Perioperative Nurses: Protocol for a Mixed Methods Study. *JMIR Research Protocols*, 14(1), e64970. <https://preprints.jmir.org/preprint/64970>
- Ossenberg, C.; Brunelli, V.N.; Mitchell, M.; **Henderson, A.** (2025). Nurses' perceptions of the relevance of their role and responsibilities for adopting evidence-based feedback into practice: An implementation study, *Journal of Advanced Nursing*, 81, 7525-7540, <https://doi.org/10.1111/jan.16768>
- Padigos, J.**; Petrie, A. (2025). From trauma-informed pedagogy to trauma-informed andragogy: The ethics of achieving lexical clarity to reframe approaches in adult clinical education, *Nursing Forum*, 2025, 1-8, <https://doi.org/10.1155/nuf/2248498>
- Peel, R.** (2025). The theory of relationship sabotage: A preliminary evaluation of conceptual models expanding on attachment and goal-orientation frameworks, *Behavioral Sciences*, 15, 1-19, <https://doi.org/10.3390/bs15081091>
- Purdon, H., Pearce, T., Jackson, B., **Wayland, S.**; Maple, M. (2025). Lived Experience Participation in Suicide Prevention Activities in Australia, a Scoping Review, *Health Expectations*, 28, <https://doi.org/10.1111/hex.70241>
- Richardson, H., Payne, A., Richardson, E., Oo, M., Weir, M., **Byrne, A-L., Le Lagadec, D.**, Hayman, M. (2025). Residential medication management reviews: A call for improved collaboration and systems integration in aged care. *Working with Older People*, 29, 247-253, <https://doi.org/10.1108/WWOP-09-2024-0060>
- Rogers, D., Calleja, P., Byrne, A-L., Sahay, A. (2025). Exploring the Role and Skill Requirements of Registered Nurses Working in Rural and Remote Areas. A Scoping Review. *Journal of Clinical Nursing*, 34(8), 1-25. <https://doi.org/10.1111/jocn.17689>
- Ryan, C.**, Cant, R., Hyun, A., Procter, D., Alexander, L., Bloxsome, D., Hughes, L., Bogossian, F., Cooper, S. (2025). Measuring the impact of The Australian National Placement Evaluation Centre to enhance nursing and midwifery student clinical placements: A multimodal evaluation, *Nurse Education in Practice*, 87, 1-9, <https://doi.org/10.1016/j.nepr.2025.104505>
- Ryan, C., Hyun, A., Hopmans, R., Bogossian, F., Cooper, C., and the NPEC team (2025). NPEC 2024 Summary. <https://npec.com.au/wp-content/uploads/2025/06/NPEC-2024-Summary.pdf>
- Ryan, C., Johnson, P., Mainey, L., Clare, D., Galea, G., Kurup, C., Shipton, M., & Wirihana, L. (2025). These sims are different! Thematic analysis of interdisciplinary faculty experiences designing virtual simulations. *Clinical Simulation in Nursing*, 98, 101658. <https://doi.org/10.1016/j.ecns.2024.101658>
- Schmidt, T., Hodge, S., Byrne, A-L., Wirihana, L., Connor, J.M., Cole, R. L., Heidke, P. V., & Bradshaw, J. (2025). One Profession, Two Ways of Thinking: Challenges in Developing Australia's Nursing Workforce. *Nursing Inquiry*, 32(2). <https://doi.org/10.1111/nin.70026>
- Sharifnia, A.M., Kpormegbey, D.E., Thapa, D.K. and Cleary, M. (2025), A Primer of Data Cleaning in Quantitative Research: Handling Missing Values and Outliers. *Journal of Advanced Nursing*, Early View <https://doi.org/10.1111/jan.16908>
- Shoham, Y., Comish, P., Tsur, R., Silberstein, E., Krieger, Y., Eliav, T., Cleary, M., Kornhaber, R. & Goverman, J. (2024). Topical steroid use for suppression of hypergranulation in burns: Trends across the Atlantic. *Journal of Burn Care & Research*, 45(3), 598-605. <https://doi.org/10.1093/jbcr/irae191>
- Spiller, K., Ossenberg, C., Takashima, M., **Henderson, A.** (2025). Comparable achievement of workplace performance of student and graduate nurses: A quantitative cohort evaluation, *Nurse Education in Practice* 82, 1-9. <https://doi.org/10.1016/j.nepr.2024.104205>
- Tabakakis, C., Bradshaw, J., McAllister, M., & Sahay, A. (2025). Exploring Registered Nurses' Experiences of Workplace Adversity: A Descriptive Qualitative Study. *Nursing Open*, 12(4), e70233. <https://doi.org/10.1002/nop2.70233>
- van Kessel, G., Ryan, C., Paras, L. Johnson, N., Zariff, R.Z. & Stallman, H. (2025). Relationship between university belonging and student outcomes: A systematic review and meta-analysis. *The Australian and Educational Researcher*, 52, 2511-2534. <https://doi.org/10.1007/s13384-025-00822-8>
- Villamin, P., Hungerford, C., Le Lagadec, D., & Cleary, M. (2025). Promoting the Mental Well-Being of Migrant Nurses. *Issues in Mental Health Nursing*, 46(7). 1-4, 749-752. <https://doi.org/10.1080/01612840.2025.2476154>
- Villamin, P., Lopez, V., Thapa, D., Cleary, M. (2025). From Vulnerability to Stability: Migrant Nurses' Experiences of Autonomy, Competence and Relatedness—A Qualitative Descriptive Study, *Journal of Nursing Management*, 2025. 8260066. <https://doi.org/10.1155/jonm/8260066>

- Villamin, P., Lopez, V., Thapa, D.K., Cleary, M. (2025). Retaining a Multicultural Nursing Workforce: A Self-Determination Theory Perspective. *Journal of Transcultural Nursing*, 36(4). <https://doi.org/10.1177/10436596251318027>
- Villamin, P., Lopez, V., Thapa, D.K. and Cleary, M. (2025), 'Why Did They Migrate Here?': A Qualitative Descriptive Study Exploring Nurses' Motivations for Migration and Regional Relocation. *Journal of Advanced Nursing*, 81(7), 4146-4159. <https://doi.org/10.1111/jan.16620>
- Villamin, P.**, Lopez, V., Thapa, D.K., **Cleary, M.** (2025). A worked example of qualitative descriptive design: A step-by-step guide for novice and early career researchers. *Journal of Advanced Nursing*, 81, 5181-5195. <https://doi.org/10.1111/jan.16481>
- Walsh, S. A., Wirihana, L. A., & Walker, S. B. (2025). A descriptive phenomenological study of the lived experiences of preregistration nursing students who use graded assertiveness to speak up for patient safety during work-integrated learning. *Nurse Education Today*, 152. <https://doi.org/10.1016/j.nedt.2025.106761>
- Wayland, S., & Watharow, A. (2025). Reflecting on 'Doing Better': Inclusive and Accessible Qualitative Research Methods. *International Journal of Qualitative Methods*, 24. <https://doi.org/10.1177/16094069251332419>
- Wilcoxson, R.; Thompson, A.A.; Signal, T.; **Lovatt, H.** (2025) Domestic Violence Risk Assessment Tools and Australian Homelessness Services: A Scoping Review. *Australian Social Work*, 1-17. <https://doi.org/10.1080/0312407X.2025.2466483>
- Williamson, M., Capper, T.S., Chee, R.M., Ferguson, B., Lentell, K., & Haynes, K. (2025). How do midwives learn about, understand, and integrate Cultural Safety into their care of First Nations women and families? A qualitative exploration. *Women and Birth*, 3(1). 101868. <https://doi.org/10.1016/j.wombi.2025.101868>
- Yin, H., Ankers, M., Bell, A., Parry, Y., **Willis, E.** (2025) Investigating developmental status of children aged 0–5 years and its association with child gender, family background and geographic locations in Australian community-based early learning centres. *Child Care Health and Development* 51, 1-14, <https://doi.org/10.1111/cch.70097>
- You, W., Verrall, C., Willis, E., & Hills, D. (2025). Sustaining the General Practice Nursing Workforce in Australia: Demographics, Job Satisfaction, and Professional Development Challenges. *Nursing & Health Sciences*, 27(2), <https://doi.org/10.1111/nhs.70130>



Adjunct Appointments

School of Nursing Midwifery and Social Sciences

ADJUNCT APPOINTMENTS

Adjunct Professor	Annabel Taylor Colin Holmes Pauline Calleja
Adjunct Associate Professor	Elizabeth Burmeister Clare Harvey Leeanne Heaton Julie Kahl Silke Meyer Julie Shaw Anthony Welch
Adjunct Research Fellow	Sue Carswell Anne-Marie Holt Virginia Howie Vicki Lowik
Adjunct Senior Lecturer	Janie Brown Bridget Ferguson Andrew Frost Sue Hunt Elaine Jefford Colleen Johnston-Devin Lydia Mainey
Adjunct Lecturer	Carina Anderson Pammie Ellem Christine Ossenberg Simone Naughton